

Sports Floor Protection

DYNAMIK Giant Carpet Tiles

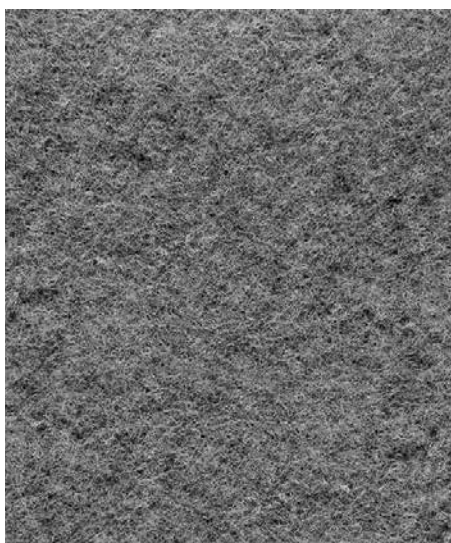


Our heavy-duty protective Giant Carpet Tiles have been designed to not only protect your sports floor, but to transform your hall into a luxury venue for a wide range of non-sporting occasions.

The combination of a high density wear layer and polymer backing offers exceptional protection and leaves no dirty bitumen scuff marks like commercial tiles. They also offer superior protection against indentation, such as that occurring from stiletto heels, tables and chairs.



Oceanic Blue



Pebble Grey



Charcoal Grey



Earth Brown



Twilight Red



Grass Green

Official Partners



Technical Information

DYNAMIK Giant Carpet Tiles



Benefits

- Designed exclusively for sports floors
- Superior indentation & surface protection
- Scuff-free backing (no bitumen)
- Underfloor heating compatible
- Ambient noise reduction
- High grip backing
- No adhesive or tape required

Installation

With 2 people 500m² of carpet tiles can be laid in less than an hour and a half when combined with our specialist trolley.

Construction

Dimension	2m x 1m
Total Thickness	5.2 mm (± 10%)
Total Weight	3.1 kg/m ² (± 10%)
Wear Layer	Fireproof polypropylene
Inner Layer	Latex
Backing Material	Polyolefin
Backing Weight	2,350 g/m ² (± 10%)
Pile Weight	570 g/m ² (± 10%)

Performance

Durability Classification (EN 1307)	Class 33 - Heavy Commercial Use
Fire Reaction (EN 13 501-1)	Bfl-S1
Acoustical Sound Absorption	$\alpha_w = 0.15$
Thermal Resistance (EN 12524)	0,08 m ² K/W
Underfloor Heating Compatibility (EN 12 524)	OK
Friction (EN 13 893)	NPD
Dimensional Stability (EN 986)	≤ 0.2 % - both ways
Electrostatic Properties (ISO 6356)	E ≤ 2 kV



**Product specifications may be subject to change without notice, please contact DYNAMIK for the latest product information*