

Sports Flooring System

Dynamik London

Synthetic Sprung Area Elastic Sports Floor



The Dynamik London system is a sprung area elastic sports floor. It incorporates elastic beams which support a counter floor and load distribution panel to accommodate a range of solid synthetic finishes including Sport Vinyl, Sport Linoleum, Sport Polyurethane and Sport Rubber. It can be packed and levelled to take out variations in the sub floor, thus removing the need for a levelling screed.

The structure of the London system allows for underfloor heating and insulation to be incorporated between the beams.

With a range of solid synthetic finishes it is ideal for both sport and non-sport activities.



London Benefits

- Meets the requirements of EN 14904
- Sport England compliant
- Packed & levelled construction
- Suited to both sport and non-sport activities
- Durable and easy to maintain
- Underfloor heating compatible
- Low maintenance costs
- 25 year warranty

Surface Finishes

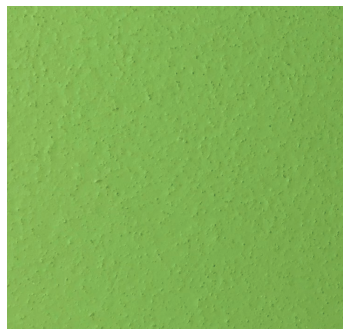
The London system can be installed with a range of solid synthetic finishes such as Sport Vinyl, Sport Linoleum, Sport Polyurethane and Sport Rubber.



Sport Vinyl



Sport Linoleum



Sport Polyurethane



Sport Rubber

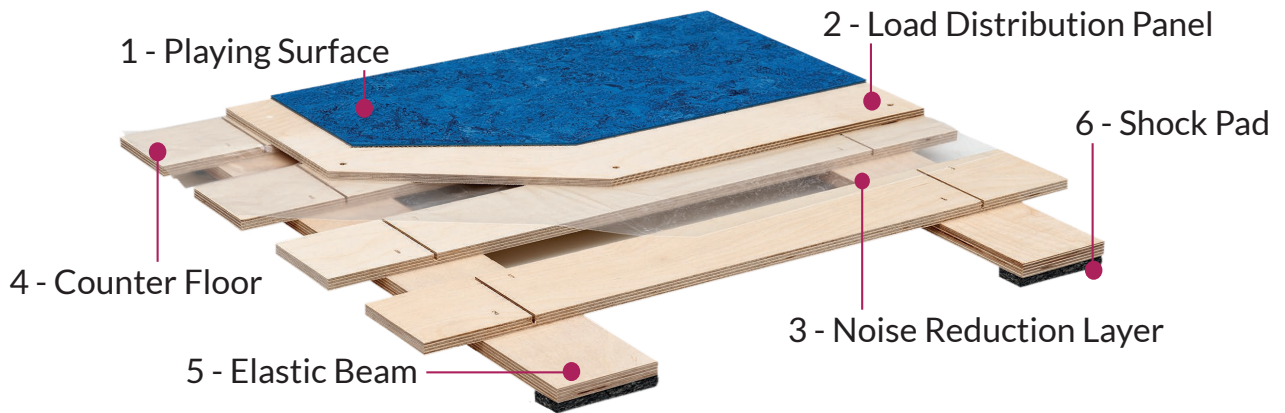
Sports Flooring System

Dynamik London

Synthetic Sprung Area Elastic Sports Floor



Technical Specifications




1	Playing Surface	As Specified
2	Load Distribution Panel - Birch Plywood - Sheet size: 2.44m x 1.22m x 12mm	12mm
3	Noise Reduction Layer - Polyethylene - Roll size: 25m x 4m x 0.03mm	0.03mm
4	Counter Floor - Birch Plywood - Beam size: 2.44m x 82mm x 12mm (139mm Centres)	12mm
5	Elastic Beam - Birch Plywood - Beam size: 2.44m x 82mm x 15mm (406mm Centres)	15mm
6	Shock Pads - Pad size: 82mm x 40mm x 10mm (357mm Centres Along Elastic Beams)	10mm
7	Levelling Blocks - To pack and level to a maximum of 250mm	To Suit Void
Minimum Construction Height (excluding playing surface & levelling blocks)		49.03mm

Performance Characteristics

Certification - EN14904	Class A3	Class A4
Shock Absorption	40% < 55%	55% < 75%
Vertical Deformation	1.8 mm < 3.5mm	2.3 mm < 5.0mm
Rolling Load	< 1,500 N	< 1,500 N
Ball Rebound	≥ 90%	≥ 90%
Slip Resistance	80 - 110	80 - 110

Specification Downloads

 BIM
www.nationalbimlibrary.com/dynamik-sports-floors

 NBS
www.ribaproductselector.com/dynamik-sports-floors

 Sports Flooring  Track & Gym  Acoustic Walling  Maintenance & Protection

0117 3015120 • info@dynamiksport.co.uk • www.dynamiksportsfloors.co.uk

010117