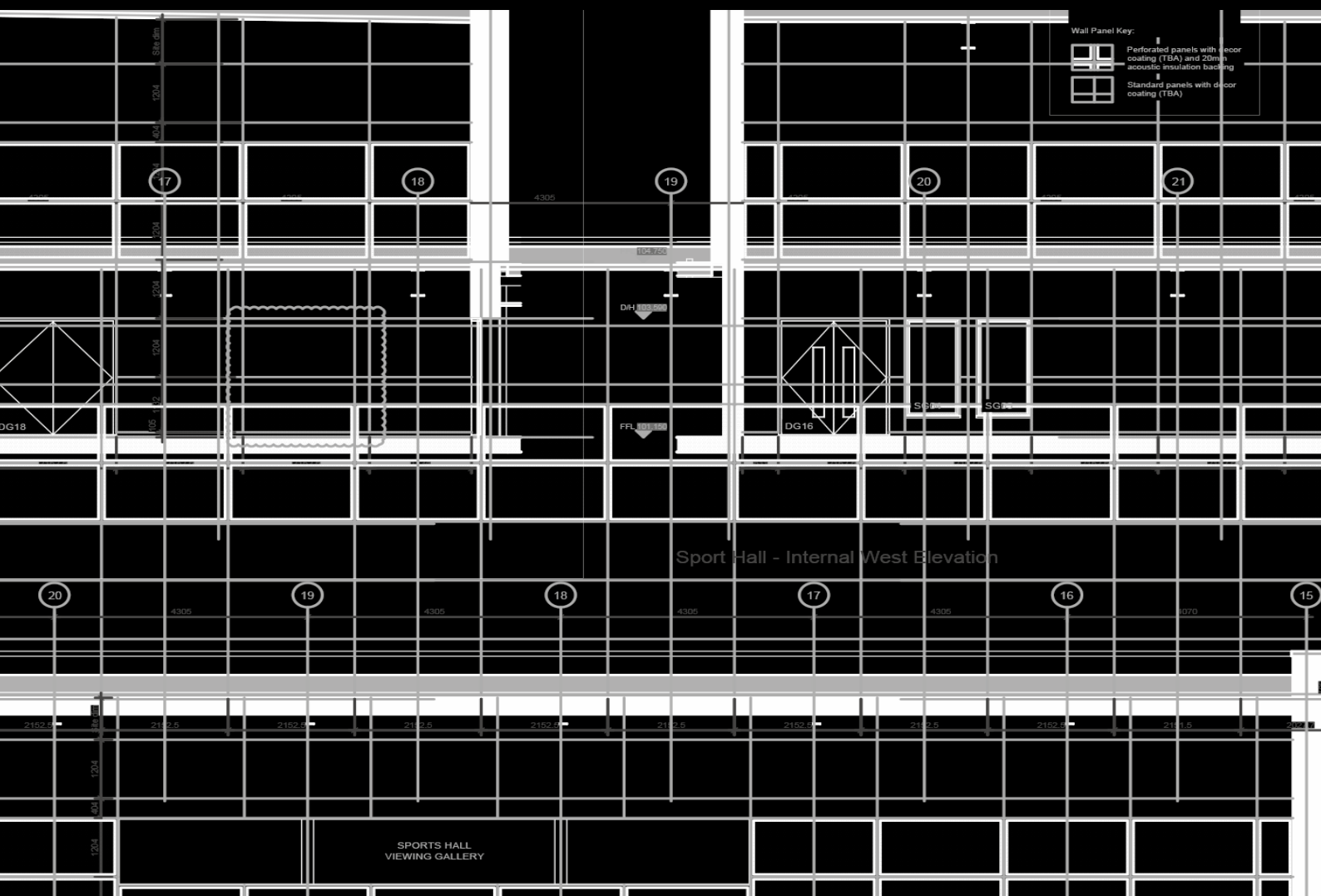


Internal Sports Walling



 Sports Flooring
  Acoustic Walling

 Track & Gym
  Maintenance & Protection



Basketball England - Official Partner

Members of:



England Netball - Official Indoor Sports Flooring Partner



British Wheelchair Basketball - Official Technical Partner



The British Basketball League (BBL) - Official Technical Partner



Basketball Wales - Official Sports Flooring Partner



England Handball - Official Sports Flooring Partner

| Background

DYNAMIK are leading providers of indoor sports solutions including sports walling, sports flooring, track and gym surfaces.

We provide the design, specification and supply of premium sports systems, enabling us to offer solutions that perfectly meet both the needs of a facility and its users.

Our structural indoor sports walling provides a durable and cost-effective solution when fitting the panels from floor to soffit.

Our premium sports wall panels come pre-finished in a range of colours and wood effects, making the panels easy to clean, highly decorative and when using acoustic panels, an ideal environment for sport and education. Whether it's multi-sport or community use, DYNAMIK have a solution.

Our Credentials

- Established in 1988
- Basketball England official partner
- England Netball official indoor sports flooring partner
- British Wheelchair Basketball official technical partner
- Meets Sport England requirements
- In-house technical expertise
- Member of the Sports Facilities Group (SFG)
- RIBA Product Selector, BIM & NBS

We Offer

- Solid & Perforated (Acoustic) sports wall panels
- Soundhush Acoustic panels by DYNAMIK
- Specification service
- New build or refurbishment options
- Range of colours and wood effects
- Easy fix, clip system
- Fire-rated panels



| Introduction

DYNAMIK offer internal sports walling to complement their range of sports flooring systems. Internal Sports Walling constructed of engineered timber is both durable and cost effective and can be fitted from floor to soffit. Perforated (Acoustic) Sports panels can be easily incorporated above door height to provide an acoustic solution.

Additionally, Soundhush Acoustic Sports panels by DYNAMIK can be fitted directly onto any solid wall to provide an acoustic solution or be fixed to our Solid Sports panels.

DYNAMIK Structural Internal Walling

The DYNAMIK Structural Internal Sports Wall provides a durable and cost effective solution for sports hall environments. With high scratch and impact resistance, the panels are designed to be an integral component of the internal wall construction and be fitted from floor to soffit.

Solid panels can be combined with matching or contrasting Perforated (Acoustic) panels to provide a continuous, flush wall finish.

Principle Features

Durability & Impact Resistance – Provides superior impact resistance from balls, equipment and hall users. This allows for both solid and acoustic panels to be fitted from floor to soffit.

Time & Cost Savings – The structural integrity of the panels enables them to be installed as an independent wall system which can be fixed directly to studwork. This eliminates the need for blockwork and other wet trades, providing a fast and efficient installation.

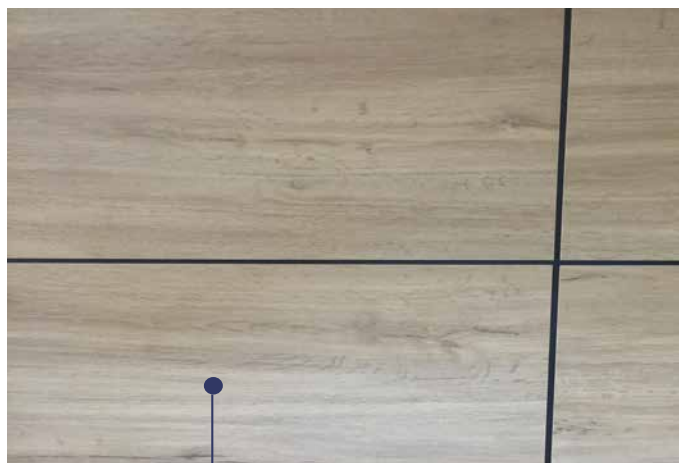
Factory Finished – Every panel is factory finished with a low maintenance, UV resistant, durable surface that does not require re-finishing over the life of the product.

Secret Clip Fixings – The supplied secret clips offer a fast and easy panel installation which eliminate unsightly surface fixings. They also provide a consistent spacing between adjoining boards.

Fire Performance – The panels are fire rated to comply with Building Regulations, Sport England, Sport Scotland and the Department of Education - Education & Skills Funding Agency (ESFA) requirements.

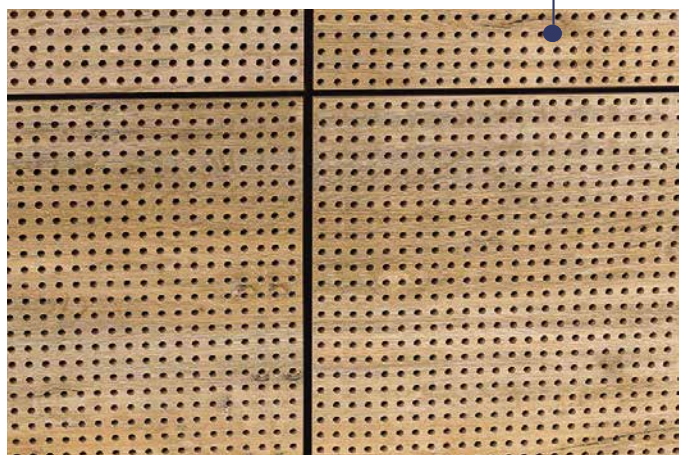
Colours – The panels are available in a range of colours & wood effects to provide a modern appearance that complements the sports floor and can achieve the required Light Reflectance Values (LRVs).

Functional and Attractive – Internal Sports Walling is becoming the preferred choice for Sports Halls.



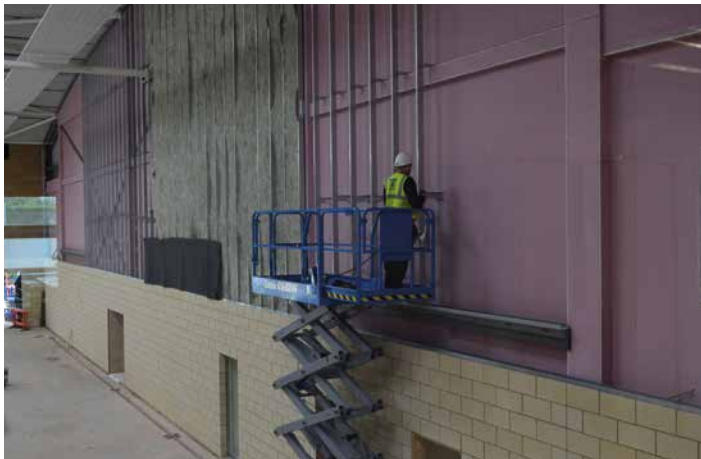
Solid panel

Perforated (Acoustic) panel



| Fixings & Installation

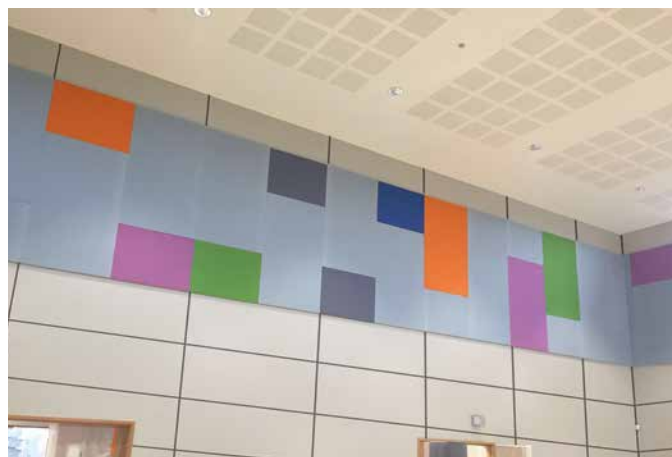
The panels can be fixed to metal or timber vertical studwork. A black acoustic fleece is placed over the studwork to “effectively” hide the gap between the panels and make the black metal brackets appear “invisible”. The panels are then installed using the supplied secret clips to ensure a consistent 7mm spacing between adjoining boards. Insulation must be incorporated behind the panels to achieve acoustic performance and enhance thermal efficiency.



Technical & Performance Specifications - Solid & Perforated (Acoustic) Panels

Panel Face	Factory finished, available in a range of colours & wood effect finishes
Panel Backing	Engineered board
Fire Performance	Fire rated to European Class B or C
Panel Sizes (l x w x d)	2,400mm x 600mm x 18mm (confirm prior to final design)
Compliance	Building Regulations, ESFA & Sport England compliant
Panel Weight	10.93kg - 14.00kg / m ²
Acoustic Performance	Class C - Perforated panels with insulation

| DYNAMIK Acoustic Sports Panels



Principle Features

Durability & Impact Resistance – A high density glass fibre core designed for superior impact resistance from balls, equipment and hall users.

Time & Cost Savings – The panels are easily installed to blockwork, studwork or plasterboard providing a cost effective acoustic solution.

Channel-Free Fixing – The supplied impaling spikes offer a fast panel installation method and eliminate unsightly t-trim or corner fixings.

Fire Performance – The panels are fire rated to National Class 1 to comply with Building Regulations, Sport England and the Department of Education - Education & Skills Funding Agency (ESFA) requirements.

Colours - Panels are custom made in over 75 fire rated coloured fabrics to provide a modern appearance that complements the sports hall design.

Installation

Installation is quick and easy since each 2.7m x 1.2m panel only weighs 14.5kg and can be fixed to a range of solid surfaces including timber, concrete, masonry, or plaster. Our UK manufacturer can supply within one week.

Technical & Performance Specifications - Acoustic Fabric Panel

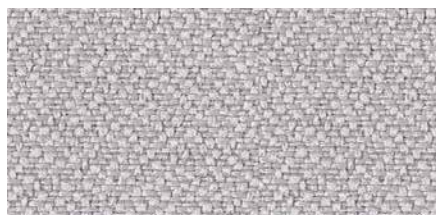
Panel Sizes	2,700mm x 1,200mm (Other panel sizes available on request)
Panel Depth	40mm
Panel Weight	4.5 kg / m ²
Fire Performance	National Class 1
Acoustic Performance	Class A (0.95 NRC)
Compliance	Building Regulations, ESFA & Sport England compliant

Soundhush
innovative sound solutions



| Fabric Finishes

The Acoustic Sports Panels are available in a large range of coloured fire-rated fabrics including the following:



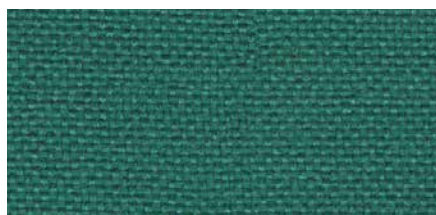
Rum



Dolphin



Ocean



Carron



Glass



Calypso

| Colour & Wood-Effect Finishes

The Solid & Perforated Sports Panels are available in a wide range of wood-effect & solid colour finishes, including:



White Oak



Natural Oak



Western Pine



Night Blue



Pastel Blue



Sage



Oxide Red



Red



Courgette



Light Grey



Anthracite

| Acoustics in Sports Halls

Performance Standard & Regulations

High sound levels are linked with ball game sports and physical training. To be able to communicate clearly without raising your voice is a benefit to all.

The overall objective of the performance standard is to ensure that the design and construction of school buildings, including sports halls provide acoustic conditions that enable effective teaching and learning.

It is accepted that noise and poor acoustic design have a detrimental effect on pupils' academic performance and teachers' vocal health.

Pupils with additional learning needs or hearing impaired pupils are particularly susceptible to the negative effects of poor acoustic design.

Practically speaking this means reverberation time (T_{mf}).



What Do We Mean By Reverberation Time?

Reverberation time is one of the key determinants of room acoustic quality, and the factor to control with regard to sound absorption. It is the time it takes for a sound to reduce by 60db within a given space. It is measured at different frequencies since certain frequency ranges are more important than others.

How Can We Control Reverberation?

The amount of sound energy a material will absorb is known as the absorption coefficient.

Typically reverberation is controlled by introducing sound absorbing surfaces. More effective absorbers and increased coverage within a room will lead to lower reverberation times.

Practical Implications

Once the size of a room and the absorption characteristics of the finishes are known, an acoustician can predict the reverberation time. They can then calculate the amount and type of sound-absorbing material to be included to meet a particular room's usage and a designer's preference.

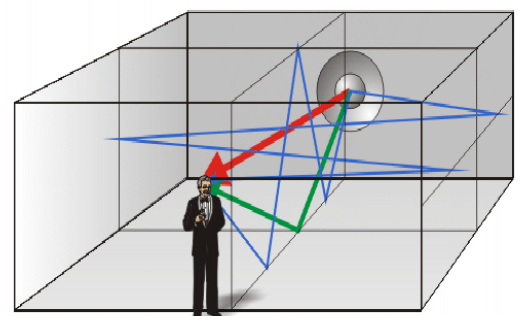
Apart from sport activities, sports halls are also used for exams and assemblies, acoustic demands are therefore very high and complex. Having large amounts of sound absorption is necessary to achieve a pleasing acoustic environment. The choice of materials is also essential as they need to be impact resistant.

Sound absorption should be distributed within a room with a minimum of 25% from the walls, 30% from the soffit and the remaining 45% provided by finishes on any of the room surfaces. It is beneficial for the sound absorption materials to be installed at a lower level rather than higher to improve their effectiveness.

In our experience, sports teachers are more prone to having throat or voice issues than any other subject teachers, as they need to raise their voice due to high levels of background noise.

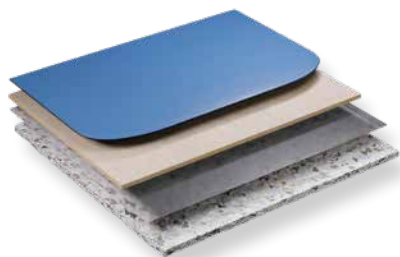
Good acoustic design is important because long reverberation times result in:

- Low speech accuracy
- Excessive levels of background noise
- Raised levels of stress for users
- Controlling and management issues



| DYNAMIK Sports Floor Systems

In addition to our sports walling solutions we offer a range of area elastic sprung sports flooring systems and point elastic floors which are Sport England compliant as well as meeting the European Standard for indoor sports flooring EN 14904.

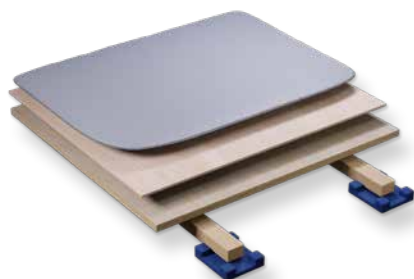


Komfort Plus

Our area elastic systems are perfectly suited for sports halls and multi-use areas where a level slab exists and a durable surface finish is the preferred choice. Surface finishes include sport vinyl, sport linoleum, sport rubber and seamless polyurethane. The system benefits from a low construction height which also makes it ideal for refurbishments.

Komfort Elite

These systems are perfectly suited for sports halls where a hardwood surface finish is preferred and a level sub-floor exists. The system is finished with an engineered hardwood which provides increased stability and consistent performance.



Flexi-Beam Plus

Our area elastic synthetic surface systems are similar to the hardwood surface systems in that they are perfectly suited for sports halls and multi-use areas where a synthetic surface finish is the preferred choice. However, it is designed to be installed where an uneven slab exists. It is constructed using a beam system that can be packed and levelled to take out deviations in the floor slab, reducing time and money as a screed is not required. This system is also compatible with underfloor heating.

Flexi-Beam Elite

This system is perfectly suited for sports halls where an uneven slab exists. Similar to our Flexi-Beam Plus systems, it is constructed using a beam & cradle system which can be packed and levelled, eliminating the time and money required for a screed. It is also the preferred hardwood system for underfloor heating.



Seamless Polyurethane (PU)

Our point elastic surface benefits from a low construction height and can be installed seamlessly in a range of colours. It is a durable alternative to foam-backed surfaces.



| Specialist Floor Systems

We also offer a range of specialist flooring solutions. These include a highly innovative glass sports floor with LED line markings, high performance strength and conditioning surfaces and specially constructed portable floors.



ASB GlassFloor



Mondo Track



Gym-Flex



Portable Floors

| DYNAMIK's Recent Projects

Universities

- Cardiff Metropolitan University
- Manchester Metropolitan University
- Solent University, Southampton
- University of Bath
- University of Cambridge
- University of East London (UEL)
- University of Essex
- University of Gloucestershire
- University of Liverpool
- University of Oxford
- University of St Andrews
- University of Ulster, Belfast



Colleges

- Barking & Dagenham College, London
- Brighton College, East Sussex
- Cheltenham Ladies College, Gloucestershire
- Dulwich College, London
- Ealing & Hammersmith College, London
- Emmanuel College, Gateshead
- Hartpury College, Gloucester
- Jane Austen College, Norwich
- Myerscough College, Preston
- Newbold College of Higher Education, Berkshire
- Perth College (University of the Highlands and Islands)
- South Gloucestershire and Stroud College
- Torquay College, Devon



Schools

- ACS Egham International School
- Box Hill School, Surrey
- Don Valley Academy, Doncaster
- Gateshead Academy for Sport
- Henlow Academy, Bedfordshire
- King's College School, Cambridge
- King Edward's School, Birmingham
- Lordswood Girls' School, Birmingham
- Loretto School, Musselburgh
- Mickleham School
- Millfield School, Street
- Merchant Taylors' School, Northwood
- North Oxfordshire Academy
- Queenswood, Hertfordshire
- St Helen and St Katharine, Abingdon
- The Marist Schools, Ascot
- The Windsor Boys' School



Leisure Centres & Other Projects

- Arc Leisure, Matlock
- Bury Roller Skating Arena
- Devon & Cornwall Police HQ
- English Institute of Sport, Sheffield
- Five Rivers Leisure Centre, Salisbury
- Greenhouse Sports Centre, London
- Leicester Riders Arena
- Malmsbury Sport Centre
- National Basketball Performance Centre, Manchester
- National Centre for Circus Arts, London
- Onside Youth Zone Nationwide Projects
- Poplar Baths Leisure, London
- R.A.F. Digby

Members of:



Basketball England - Official Partner



England Netball - Official Indoor Sports Flooring Partner



British Wheelchair Basketball - Official Technical Partner



The British Basketball League (BBL) - Official Technical Partner



Basketball Wales - Official Sports Flooring Partner



England Handball - Official Sports Flooring Partner

