

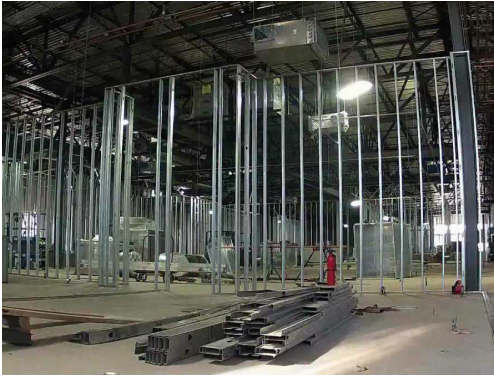
# Dynamik Internal Sports Wall

## Sports Walling System - Installation

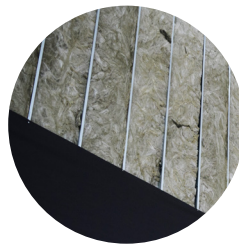
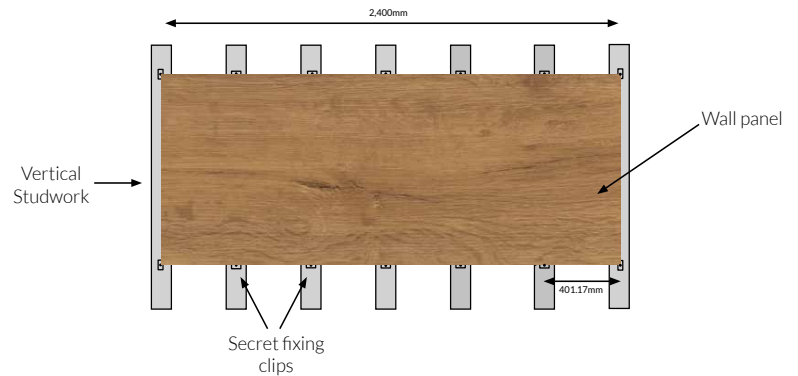


The Dynamik Structural Internal Sports Wall provides a fast and efficient sports wall solution. The panels are manufactured from engineered timber. The structural integrity allows the panels to be installed as an independent wall system which eliminates the need for blockwork and other wet trades.

The intended method of installation would be to fix sheeting rails across the structural steels to which vertical studwork and subsequently panels would be attached using supplied secret fixing clips.



Typical studwork construction for the Dynamik Structural Internal Walling which eliminates the need for blockwork and other wet trades.



Insulation must be placed behind the panels to achieve required thermal and acoustic values.

The cladding can be fixed to metal or timber vertical studwork at 401.17mm centres, blockwork or other suitable substrates after the black fleece has been installed.



A black acoustic fleece is installed behind the panels to hide stud work and disguise the fixing clips.

The panels are then installed using the supplied secret clips to ensure a consistent 7mm spacing between adjoining boards.



The panels are fixed using the secret clips which are to be placed into the pre-routed edges to leave the appearance of a fixture free installation.

There is no need to drill the panels as they are already pre-routed to fit easily onto the secret fixing clips.

Each panel weighs approximately 14kg /m<sup>2</sup>.



At the corners the clips should be mounted vertically to capture the board you are fixing and the next. The screws should be black so as to appear invisible once fixed through the clips.