

# Sports Flooring System

## Dynamik Flexi-Beam Plus

Synthetic Sprung Area Elastic Sports Floor

# DYNAMIK



The DYNAMIK Flexi-Beam Plus system is a sprung area elastic sports floor. It incorporates elastic beams which support a counter floor and load distribution panel to accommodate a range of solid synthetic playing surfaces including Sport Vinyl, Sport Linoleum, Sport Polyurethane and Sport Rubber. It can be packed and levelled to take out variations in the sub floor, thus removing the need for a levelling screed.

The structure of the Flexi-Beam Plus system allows for underfloor heating and insulation to be incorporated between the beams.

With a range of solid synthetic finishes it is ideal for both sporting and non-sporting activities.

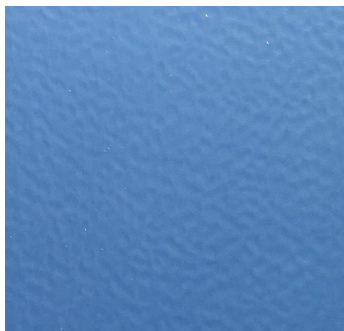


### Flexi-Beam Plus Benefits

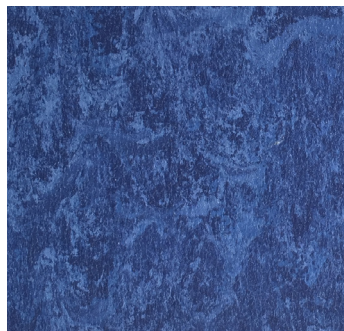
- Meets the requirements of EN 14904
- Sport England compliant
- Packed & levelled construction
- Suited to both sport and non-sport activities
- Durable and easy to maintain
- Underfloor heating compatible
- Low maintenance costs
- 25 year warranty

### Surface Finishes

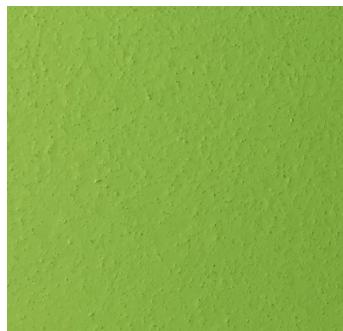
The Flexi-Beam Plus system can be installed with a range of solid synthetic playing surfaces such as Sport Vinyl, Sport Linoleum, Sport Polyurethane and Sport Rubber.



Sport Vinyl



Sport Linoleum



Sport Polyurethane



Sport Rubber

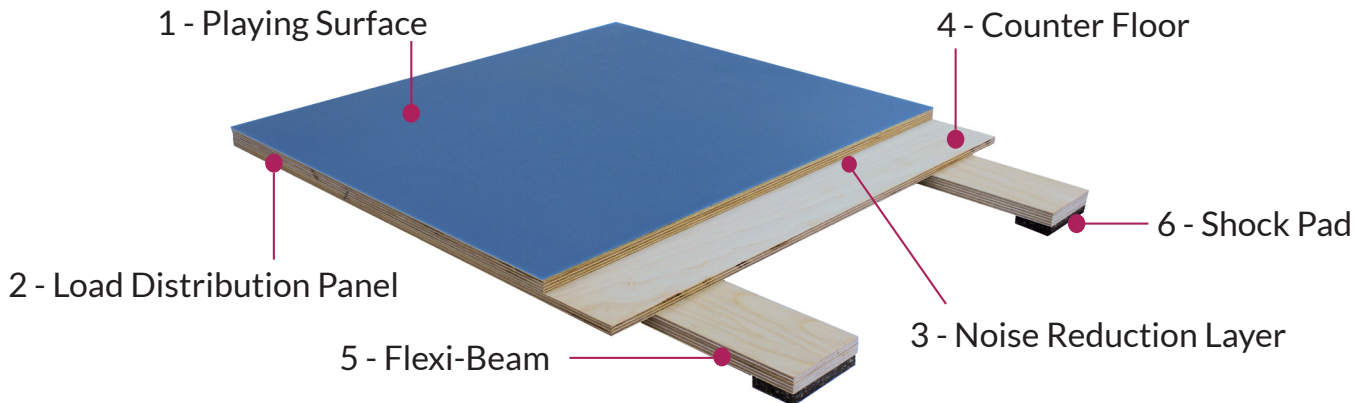
# Sports Flooring System

## Dynamik Flexi-Beam Plus

Synthetic Sprung Area Elastic Sports Floor



### Technical Specifications




|  |   |              |
|--|---|--------------|
| 1  | Playing Surface                                 | As Specified |
| 2  | Load Distribution Panel                         | 12mm         |
| 3  | Noise Reduction Layer - Polyethylene            | 0.03mm       |
| 4  | Counter Floor                                   | 9mm          |
| 5  | Flexi-Beam: 406mm Centres                       | 15mm         |
| 6  | Shock Pads: Pad size: 82mm x 40mm x 10mm        | 10mm         |
| 7  | Levelling Blocks: Minimum void requirement 75mm | To Suit Void |
| Minimum Construction Height (excluding playing surface & levelling blocks) |   | 46.03mm      |




### Performance Characteristics

| Certification - EN14904 | Class A3       | Class A4       |
|-------------------------|----------------|----------------|
| Shock Absorption        | 40% < 55%      | 55% < 75%      |
| Vertical Deformation    | 1.8 mm < 3.5mm | 2.3 mm < 5.0mm |
| Rolling Load            | < 1,500 N      | < 1,500 N      |
| Ball Rebound            | ≥ 90%          | ≥ 90%          |
| Slip Resistance         | 80 - 110       | 80 - 110       |

### Specification Downloads

 BIM  
<https://www.nationalbimlibrary.com/en-gb/dynamik-sports-floors>

 NBS  
<https://www.ribaproductselector.com/dynamik-sport/27790/overview.aspx>

 Sports Flooring  Track & Gym  Acoustic Walling  Maintenance & Protection

0117 3015120 • [info@dynamiksport.co.uk](mailto:info@dynamiksport.co.uk) • [www.dynamiksportsfloors.co.uk](http://www.dynamiksportsfloors.co.uk)

190319