

Sports Flooring System Dynamik Flexi-Beam Plus

Sprung Area Elastic Sports Floor

DYNAMIK



The DYNAMIK Flexi-Beam Plus system is a sprung area elastic sports floor. It incorporates elastic beams which support a counter floor and load distribution panel to accommodate a range of solid synthetic playing surfaces including Sport Vinyl, Sport Linoleum, Sport Polyurethane and Sport Rubber. It can be packed and levelled to take out variations in the sub floor, thus removing the need for a levelling screed.

The structure of the Flexi-Beam Plus system allows for underfloor heating and insulation to be incorporated between the beams.

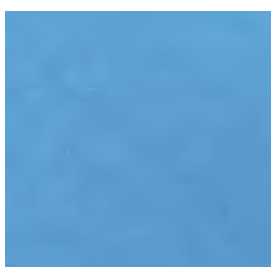
With a range of solid synthetic finishes it is ideal for both sporting and non-sporting activities.

Flexi-Beam Plus Benefits

- Meets the requirements of EN 14904
- Sport England compliant
- Packed & levelled construction
- Suited to both sport and non-sport activities
- Durable and easy to maintain
- Underfloor heating compatible
- Low maintenance costs
- 25 year warranty

Surface Finishes

The Flexi-Beam Plus system can be installed with a range of solid synthetic playing surfaces such as Sport Vinyl, Sport Linoleum, Sport Polyurethane and Sport Rubber.



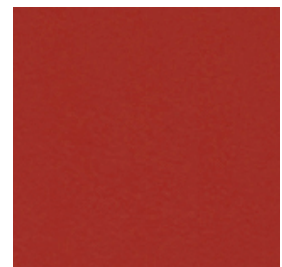
Sport Vinyl



Sport Linoleum



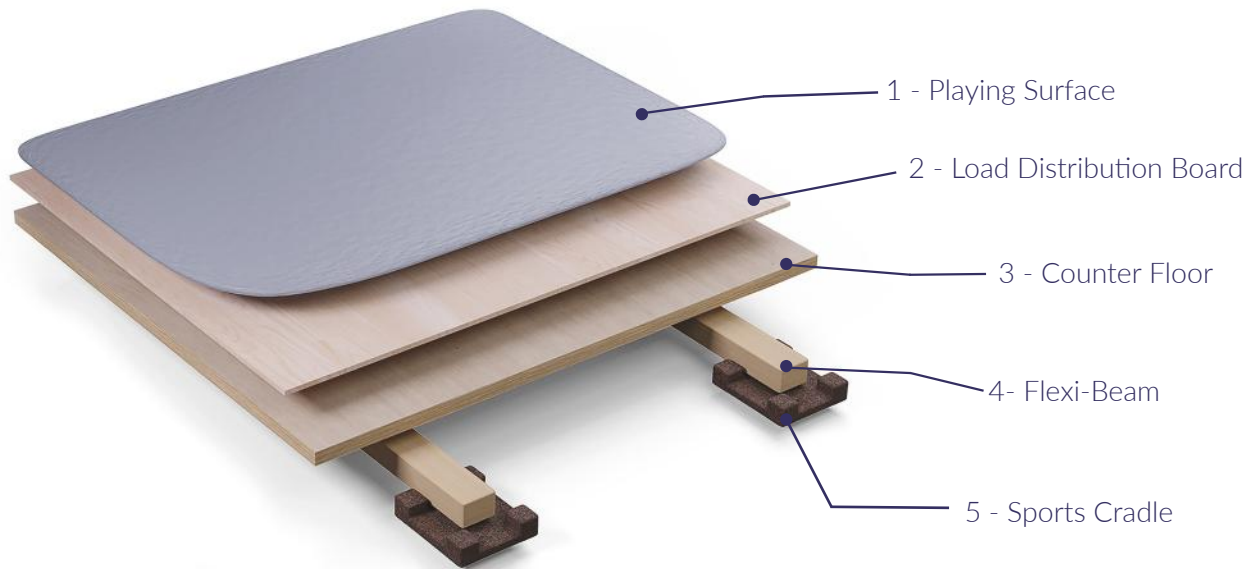
Sport Polyurethane



Sport Rubber

Dynamik Flexi-Beam Plus

Technical Specifications



1	Playing Surface	As Specified
2	Load Distribution Board	6mm
3	Counter Floor: (T+G Modules)	18mm
4	Flexi-Beam: (406mm Centres)	27mm
5	Sports Cradle: 100mm x 100mm x 10mm (600mm Centres Along Flexi-Beams)*	10mm
6	Levelling Shims: Minimum void requirement 65mm	To Suit Void
Minimum Construction Height (excluding playing surface & levelling shims)		61mm

*Thickness of cradles/beams can vary dependent on void depth up to 120mm. For a greater void than 120mm, cradle-base packers can be used.

Performance Characteristics

Certification - EN14904	Class A3	Class A4
Shock Absorption	40% < 55%	55% < 75%
Vertical Deformation	1.8 mm < 3.5mm	2.3 mm < 5.0mm
Rolling Load	< 1,500 N	< 1,500 N
Ball Rebound	≥ 90%	≥ 90%
Slip Resistance	80 - 110	80 - 110

Specification Downloads



BIM

<https://www.nationalbimlibrary.com/en-gb/dynamik-sports-floors>



NBS

<https://www.ribaproductselector.com/dynamik-sport/27790/overview.aspx>