

Sport Linoleum Synthetic Playing Surface



We illustrate below samples of the Sport Vinyl playing surface. This can be combined with sprung systems, DYNAMIK Komfort Plus & DYNAMIK Flexi-Beam Plus, to provide a durable high performance floor, ideal for both sporting and non-sporting multi-usage.



Sunflower



Amber *



Terracotta *



Carmine



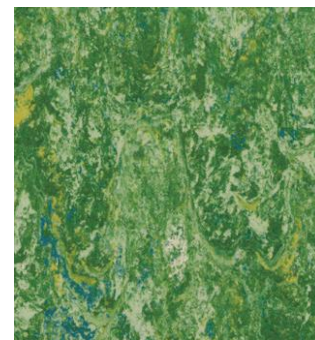
Azurite



Sisal *



Apple Green



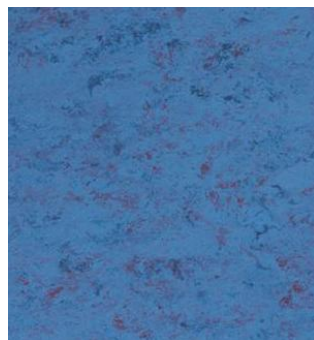
Grass



Hyacinth



Periwinkle



Blue Purple



Navy



Horizon *



Pewter



Steel *



Slate *

**Product specifications may be subject to change without notice, please contact DYNAMIK for the latest product information*

Sport Linoleum



Sport Linoleum Benefits

- Extremely durable - High resistance to indentation & rolling loads
- Environmentally friendly - Made using 93% natural products and is 100% recyclable
- Easy to maintain - Virtually maintenance free with low life cycle costs
- Wheelchair use - Low rolling resistance ideal for wheelchair sports
- Factory Sealed - Easy to clean and provides ideal slip resistance for sport
- Sports Performance - Sport England and ESFA compliant

Technical & Performance Information When Combined With Our Komfort Plus & Flexi-Beam Plus

	2.5mm Sport Linoleum	*3.2 Sport Linoleum
Factory Sealed	Yes	Yes
Certification	EN 14904	EN 14904
Shock Absorption	40% < 75%	40% < 75%
Vertical Deformation	1.8 mm < 5.0 mm	1.8 mm < 5.0 mm
Rolling Load	≥ 1,500 N	≥ 1,500 N
Ball Rebound	≥ 90%	≥ 90%
Reaction to fire	Cfl s1	Cfl s1
Impact Sound Reduction	≥ 20 db	≥ 20 db
Underfloor Heating Compatible	Yes (Flexi-Beam Plus)	Yes (Flexi-Beam Plus)

DYNAMIK Komfort Plus



DYNAMIK Flexi-Beam Plus



Official Partners

