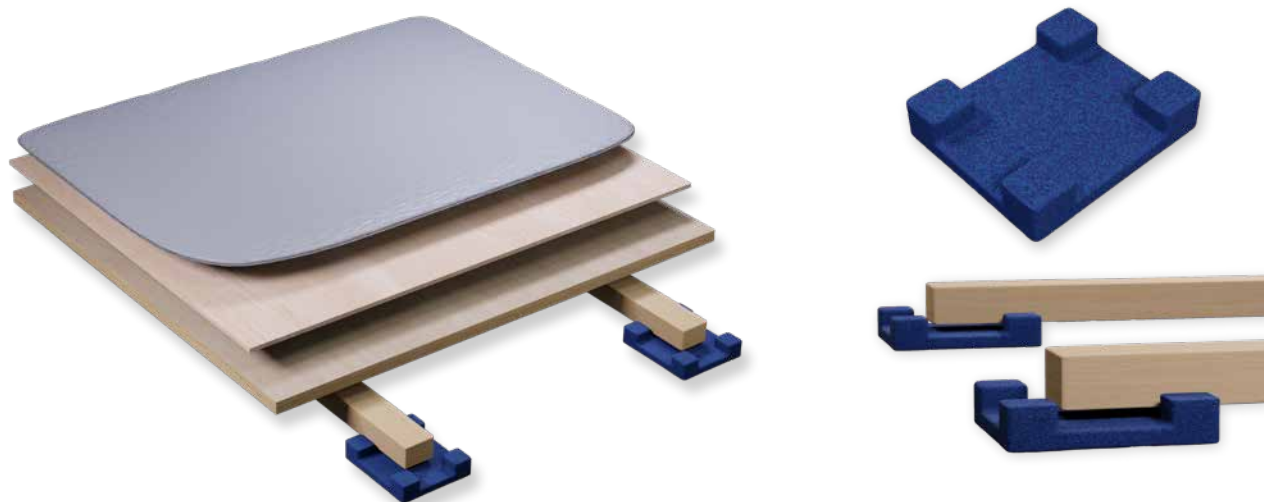


Sports Flooring System

DYNAMIK Flexi-Beam Plus

Sprung Area Elastic Sports Floor

DYNAMIK



The DYNAMIK Flexi-Beam Plus system is a sprung area elastic sports floor. It incorporates elastic Flexi-Beams which support a counter floor and load distribution panel to accommodate a range of solid synthetic playing surfaces including Sport Vinyl, Sport Linoleum, Sport Polyurethane and Sport Rubber. It can be packed and levelled to take out variations in the sub floor, thus removing the need for a levelling screed. The structure of the Flexi-Beam Plus system allows for underfloor heating and insulation to be incorporated if required.

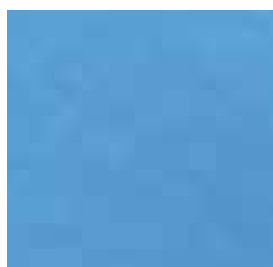
With a range of solid synthetic finishes it is ideal for both sporting and non-sporting activities.

Flexi-Beam Plus Benefits

- Meets the requirements of EN 14904
- Sport England compliant
- Packed & levelled construction
- Suited to both sport and non-sport activities
- Durable and easy to maintain
- Underfloor heating compatible
- Low maintenance costs
- 25 year warranty

Surface Finishes

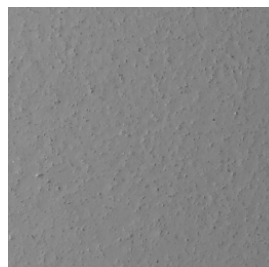
The Flexi-Beam Plus system can be installed with a range of solid synthetic playing surfaces such as Sport Vinyl, Sport Linoleum, Sport Polyurethane and Sport Rubber.



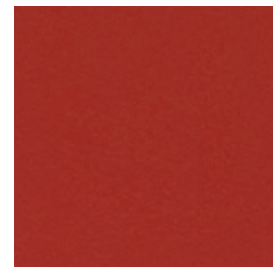
Sport Vinyl



Sport Linoleum



Sport Polyurethane



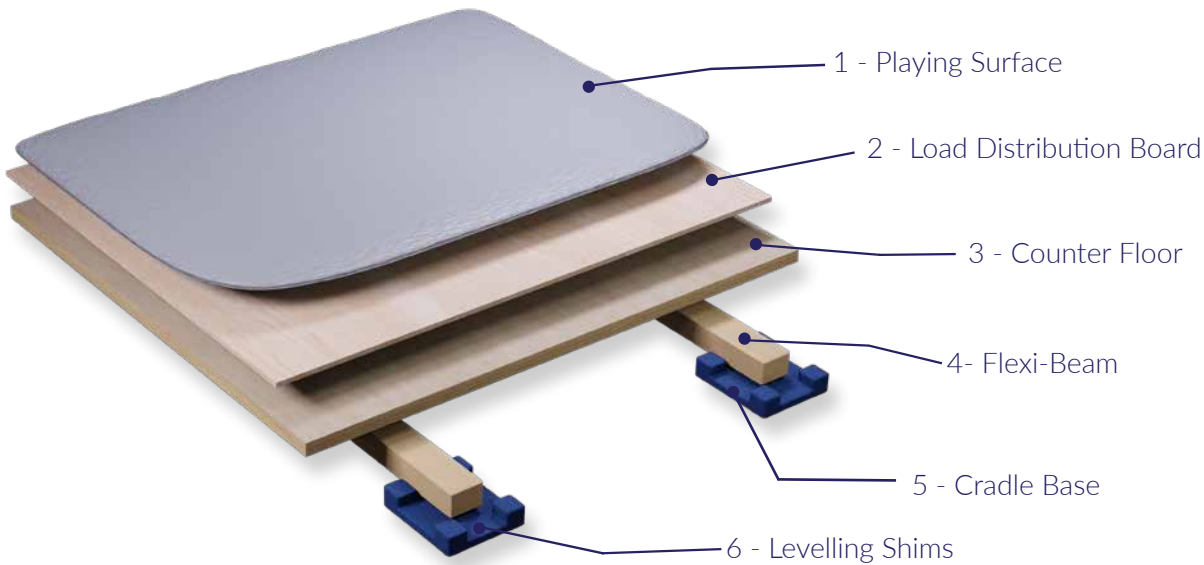
Sport Rubber

Official Partners



DYNAMIK Flexi-Beam Plus

Technical Specifications



| | | |
|---|-------------------------------------|--------------|
| 1 | Playing Surface | As Specified |
| 2 | Load Distribution Board | 6mm |
| 3 | Counter Floor: (T+G Modules) | 18mm |
| 4 | Flexi-Beam | 24mm |
| 5 | Sports Cradle: 100mm x 100mm x 10mm | 10mm |
| 6 | Levelling Shims | To Suit Void |
| System Thickness (excluding levelling shims) | | 58mm |
| <i>A minimum void (drop in screed) of 75mm is required to install, pack and level the system.</i> | | |

Thickness of cradles/beams can vary dependent on void depth up to 100mm. For a greater void than 100mm, cradle-base packers can be used.

Performance Characteristics

| Certification - EN14904 | Class A3 | Class A4 |
|-------------------------|----------------|----------------|
| Shock Absorption | 40% < 55% | 55% < 75% |
| Vertical Deformation | 1.8 mm < 3.5mm | 2.3 mm < 5.0mm |
| Rolling Load | < 1,500 N | < 1,500 N |
| Ball Rebound | ≥ 90% | ≥ 90% |
| Slip Resistance | 80 - 110 | 80 - 110 |

Specification Downloads



Product Specification downloads for our DYNAMIK products are available through NBS Source.

Product specifications may be subject to change without notice, please contact DYNAMIK for the latest product information