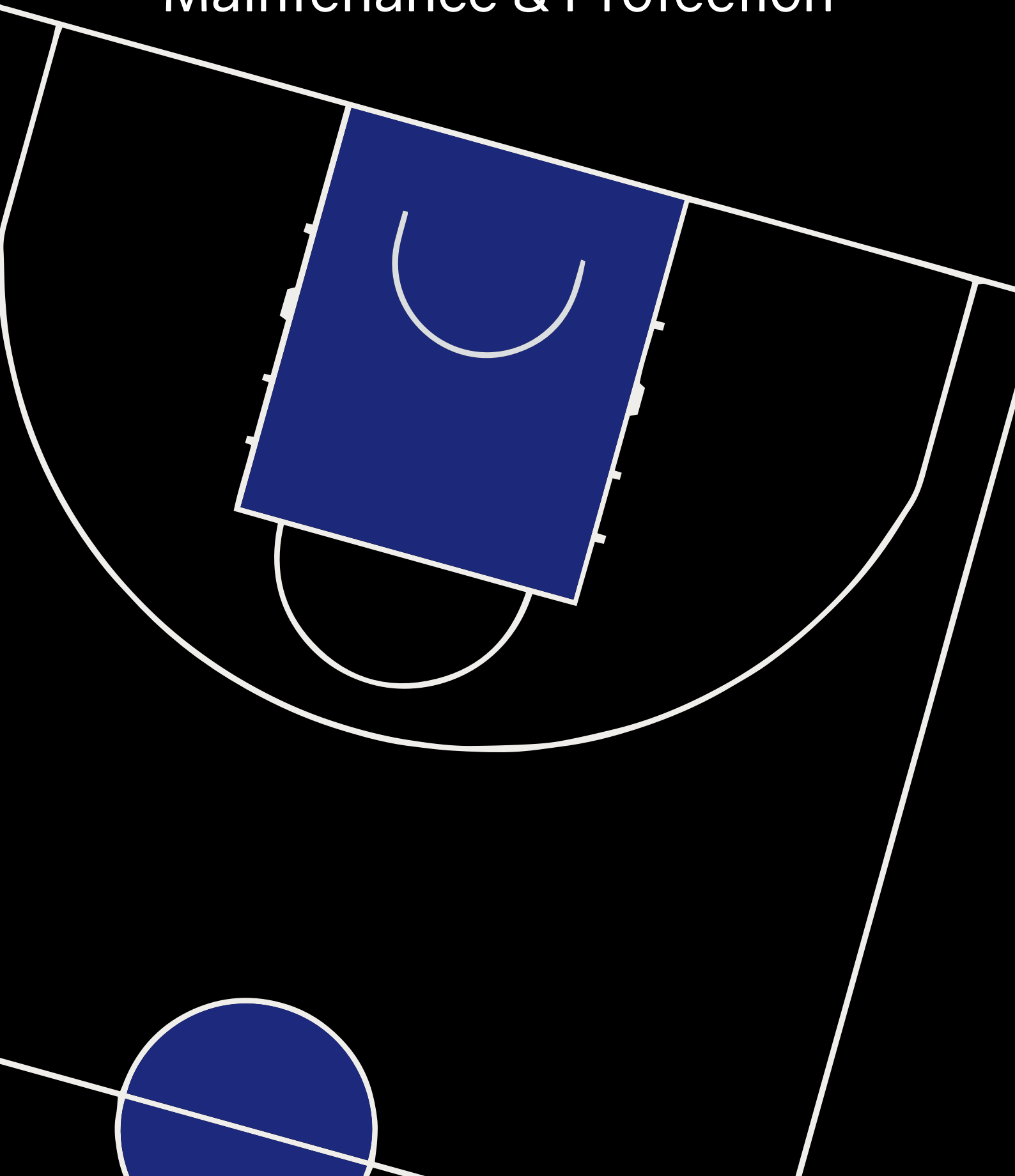


# ***DYNAMIK***

Maintenance & Protection





With over 20 years experience and in excess of 100 sports floors installed each year, DYNAMIK are leading UK providers of Indoor Sports Flooring, Protection, Maintenance & Aftercare Services. We provide the design, supply and installation of premium sports floors, enabling our aftercare team to offer advice and protection solutions that perfectly meet both the needs of your facility and its users.

## Official Sports Flooring Partners

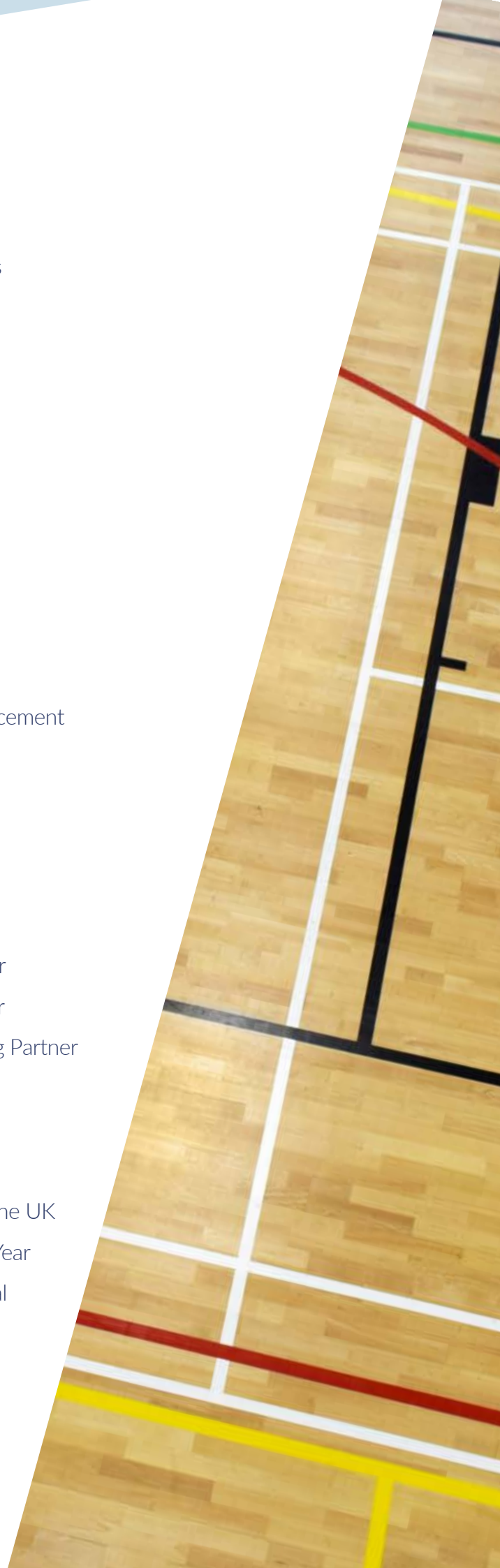


# | What We Offer

- Floor Protection - DYNAMIK Giant Carpet Tiles
- Floor Protection - DYNAMIK Roll Out Vinyl Coverings
- Line Marking - Consultation, Design & Approval
- Line Marking - Preparation & Installation
- Maintenance - Sand, Lacquer Seal & Protect
- Maintenance - Polyurethane (PU) Refurbishment
- Aftercare - Scrub Etch, Lacquer Re-Seal to Protect
- Bespoke Logo and Court Design
- Bespoke Court Zone Staining
- Painted Court Surrounds
- Basketball Keys & Centre Circle Infills
- Floor Repairs - Indoor Resilient Surfaces
- Floor Repairs - Timber Board Reconstruction or Replacement

# | Our Credentials

- Over 20 years supporting British Sport
- Basketball England Official Partner
- England Netball Official Indoor Sports Flooring Partner
- British Wheelchair Basketball Official Technical Partner
- British Basketball League (BBL) Official Sports Flooring Partner
- Basketball Wales Official Sports Flooring Partner
- England Handball Official Sports Flooring Partner
- Member of the Sports Facilities Group (SFG)
- Over 100 sports floors installed per year throughout the UK
- Over 15,000m<sup>2</sup> of Floor Protection Distributed Each Year
- DBS Certified, HMP, MOD & Local Authority Approval
- Facility Management Company (FM) Approval
- In-House Aftercare Support Team
- One of the UK's Largest Providers of Maintenance, Surface Protection & Aftercare Services





# | DYNAMIK Maintenance & Aftercare

We offer Protection, Maintenance & Aftercare Services which help to preserve your Sports Hall, Studio or Village Hall, maintaining your floor system and surface throughout its life cycle.

Every floor requires regular Maintenance & Aftercare, not only to preserve aesthetics, but also it's performance characteristics. Failure to do so can lead to deterioration of the playing surface, potentially making it slippery and unsafe for users.

## Our Services Include:



### Professional Chemical Clean

This process is used to remove dirt, grease and contaminants. A build-up of these can cause your floor to become slippery, as well as looking old and faded.



### Scrub & Re-Seal - Timber Only

This process includes a chemical clean to remove contaminants that can build up over time, causing the floor to become slippery. DYNAMIK mechanically scrub etch the surface to create a key, in preparation for new lacquer seals to be applied.



### Sand & Re-Seal - Timber Only

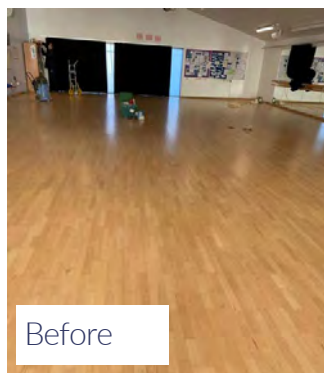
This process allows the wooden floor to be taken back to the bare timber surface, removing any old lacquers or painted lines. The floor is left with a smooth finish ready for the new applications of lacquer seals and line markings.



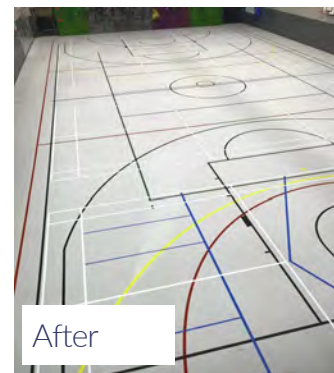
### Polyurethane (PU) Refurbishment

This process allows for the refurbishment of your existing Polyurethane sports floor, whilst reinstating the required slip resistance. We have two options available dependent upon the condition of your existing surface, our PU Colour Coating Re-application and our PU Re-coating and Repair System. These options also allow for the updating of line marking and logos and also provides the opportunity to totally individualise your facility.

## Dance Studio - Sand & Re-Seal



## Sports Hall - PU Re-coating and Repair System

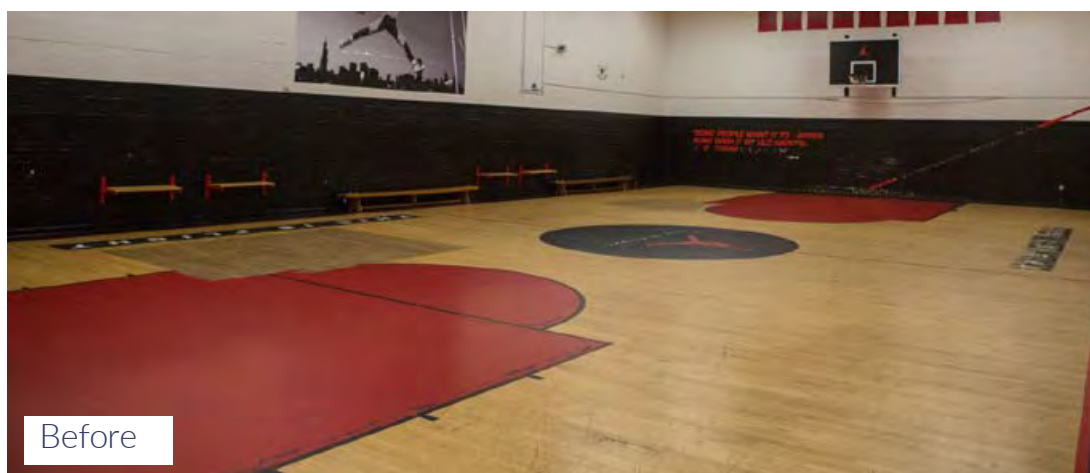


# | DYNAMIK Floor Repairs

Our Technicians have over 20 years experience of Installing, Maintaining, Repairing and providing the Aftercare for a variety of surface finishes.

## The Jordan Court

This famous facility is owned and operated by The Black Prince Trust, a charity that works with other commercial organisations to offer sessions and sports programmes for the local community. The Jordan Court is part of a dedicated, state-of-the-art Indoor Basketball Facility that receives thousands of visitors each year and serves to encourage and facilitate players from beginners through to British Basketball League (BBL) Athletes.



Repairs were carried out to the floor before completing a full Sand, Re-Seal and Re-Line Mark. The new court lines also incorporate the Nike Jump Man Logo.

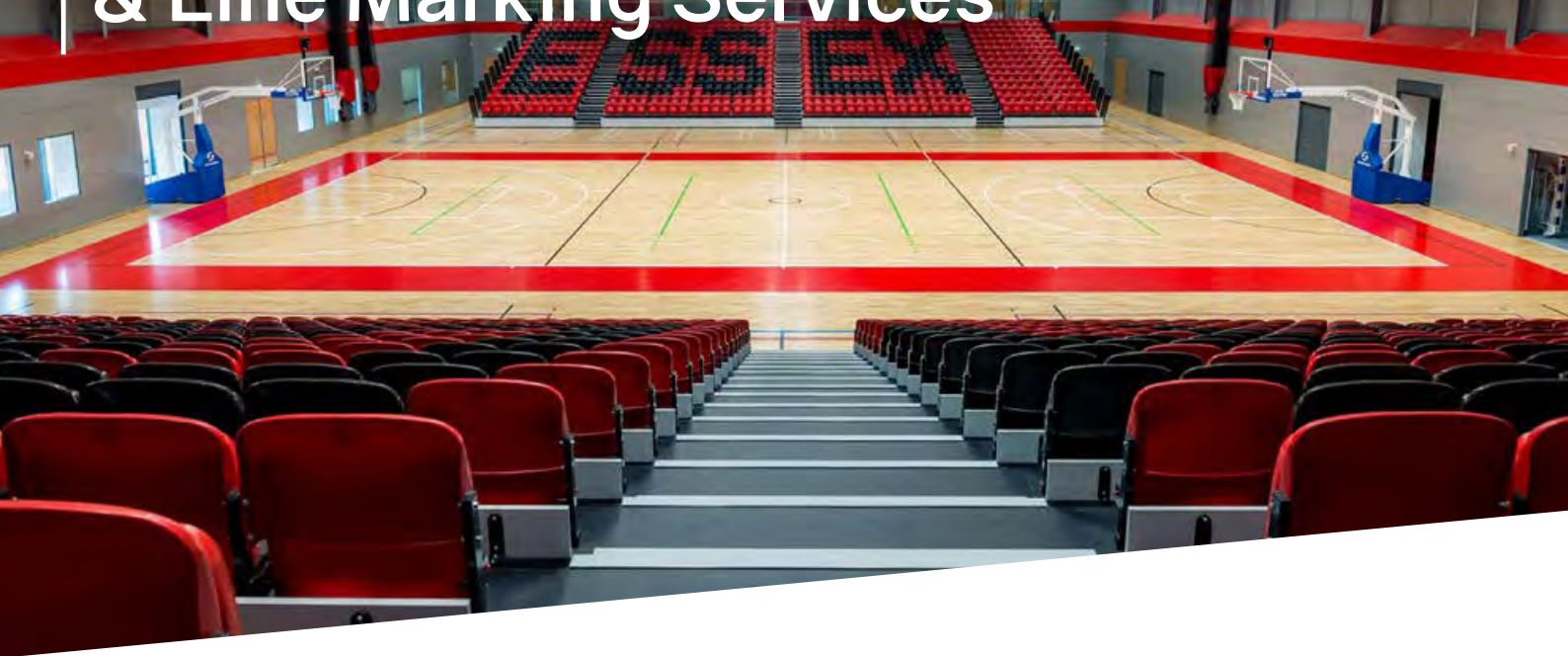


Knowledge and experience are essential when repairing a sports floor. There are many technical aspects to sprung undercarriage systems that must be taken into consideration.

Carrying out regular maintenance, such as repairs to damaged boards and synthetic surfaces, not only protects the playing surface but also the sub base or sprung undercarriage. It is important to understand that most sport floor surfaces will experience minor damage and will require ongoing maintenance throughout their life. By using an experienced DYNAMIK Technician, you will ensure that repairs are carried out professionally, maintaining the playing characteristics, sports performance, and slip resistance, prolonging the life expectancy of your playing surface.



# DYNAMIK Bespoke Design & Line Marking Services



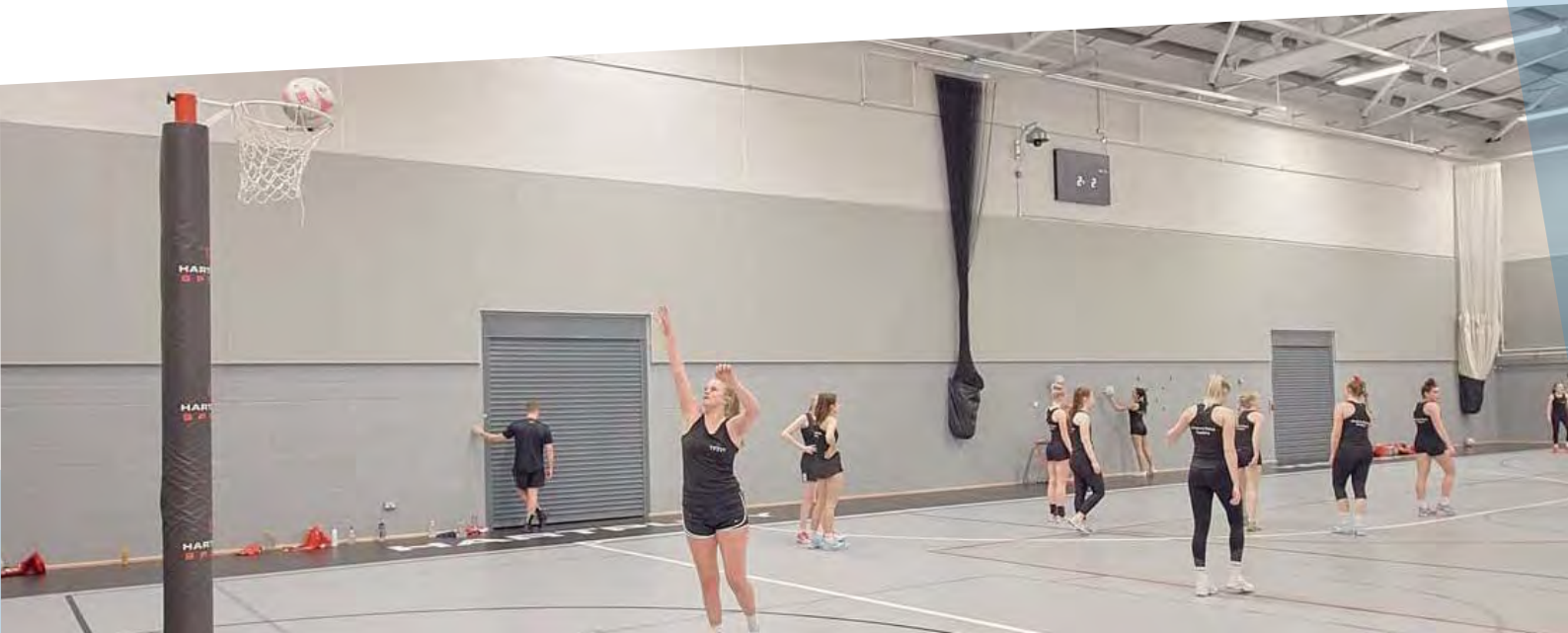
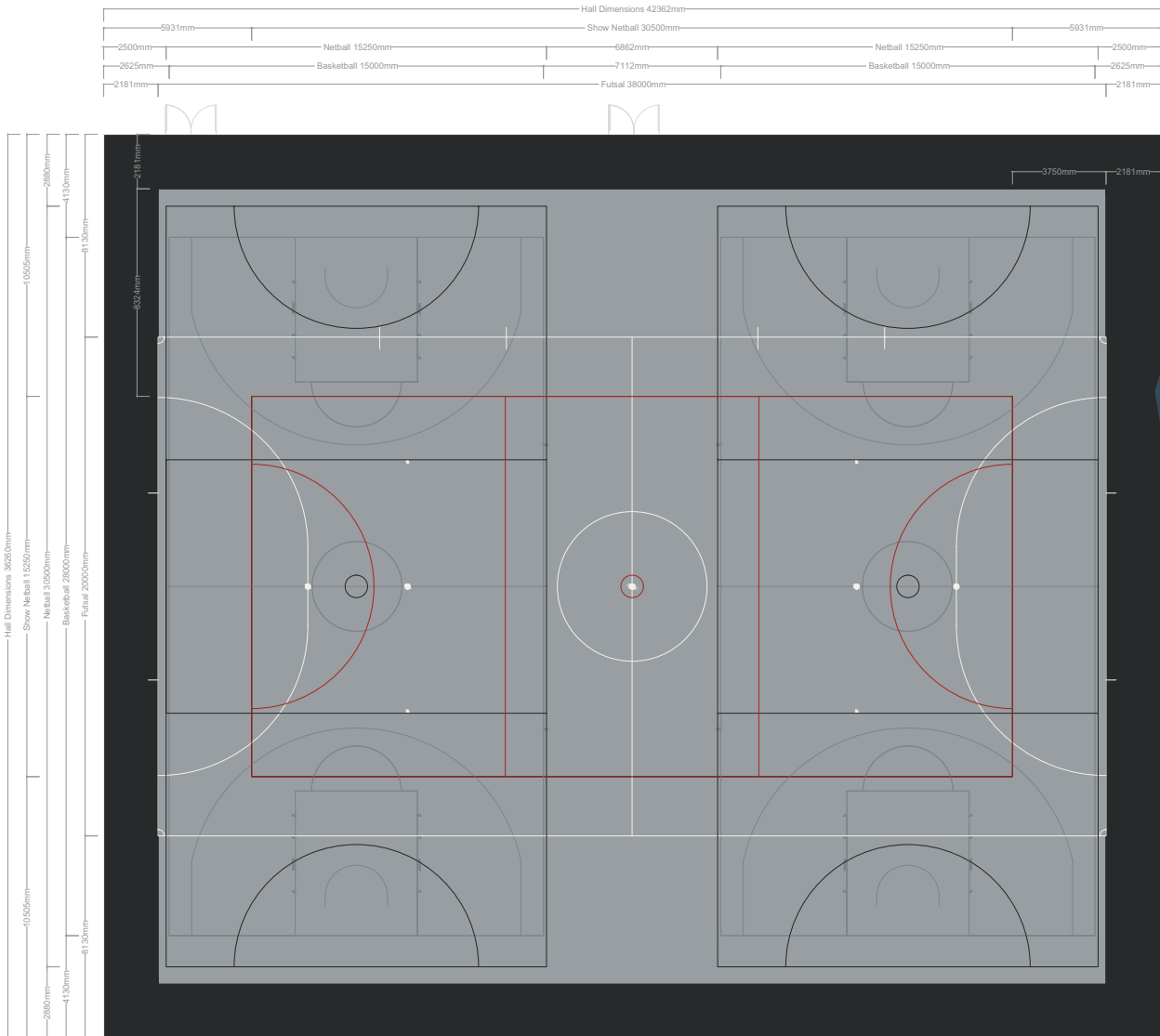
DYNAMIK's in-house design team work with you to create your vision by producing Auto desk CAD line-marking drawings, and court designs.



- Restore Worn or Faded Court Markings
- New Court Markings
- Bespoke Court Zone Staining
- Painted Court Surrounds & Logos
- Basketball Key and Centre Circle Infills
- Emblems, School Crests or Sponsor Decals

# Line Marking

Line Marking is a vital component of your sports floor. We carry out the initial marking on your new sports floor and periodic re-marking due to wear and tear. The design and accuracy are key to your chosen sports, whether it is a multi-use, community or sport specific venue.





# | DYNAMIK Sports Floor Protection

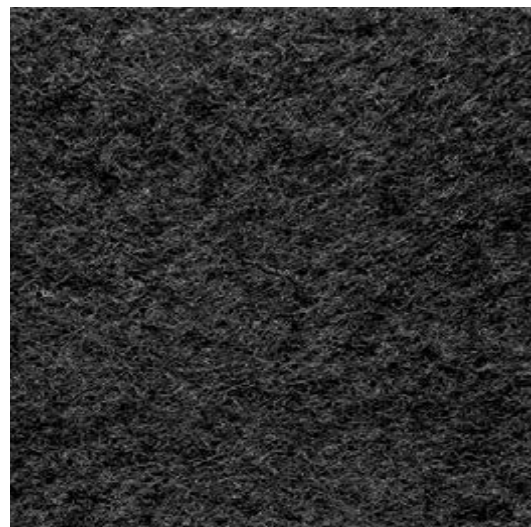
Floor protection should be used to maintain the condition of your flooring, protecting it from any damage.

- Designed specifically for Sports Floors
- Superior Indentation Resistance
- Scuff-free, high-grip backing (no bitumen)
- Underfloor Heating Compatible
- Easy to transport & store with DYNAMIK trolley
- 200m<sup>2</sup> of Carpet Tiles per trolley
- No adhesive or tape required
- Available in a variety of colours
- Fast-Track delivery available
- Ambient Noise Reduction
- 500m<sup>2</sup> of Carpet Tiles installed by two people in less than an hour

## DYNAMIK Giant Carpet Tiles



Oceanic Blue



Charcoal Grey

With our DYNAMIK Giant Carpet Tiles, the aesthetics of your hall will be enhanced, making the space far more functional for occasions such as non-sporting social events, during examination periods when desks and chairs are used in the hall. As some schools are only fortunate to have one hall, DYNAMIK Giant Carpet Tiles allow them to have the flexibility of using their hall for a different purpose.

The combination of a high density wear layer and our new polymer backing, offers exceptional protection and does not leave bitumen residue or scuff marks on your existing surface.



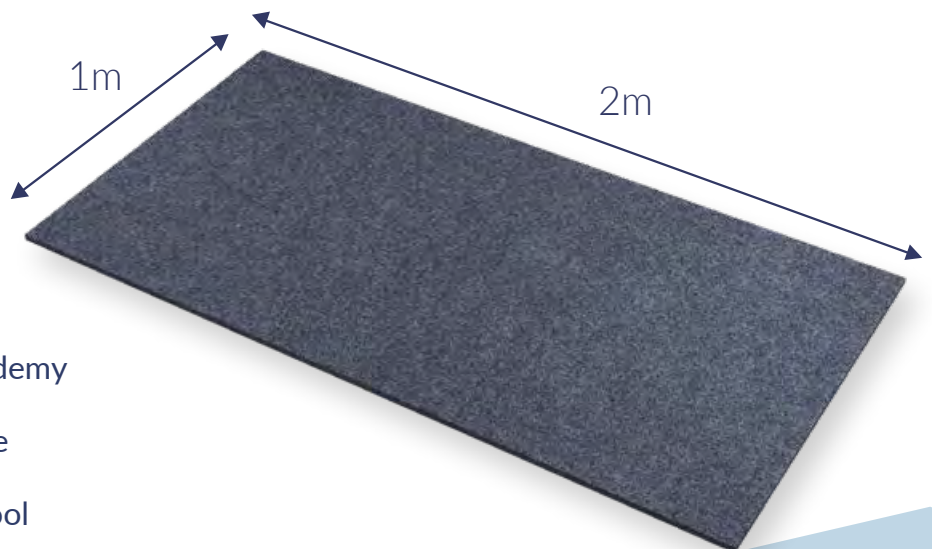
# | Installation

The DYNAMIK Giant Carpet Tiles are easy to install they simply sit neatly alongside each other. With 2 people 500m<sup>2</sup> of carpet tiles can be laid in less than an hour. Installation could not be made easier by using our specialised DYNAMIK trolley, designed to both transport and store the tiles.



## A Selection of DYNAMIK's Carpet Tile Clients

- Hartpury College
- Newbold College
- Brighton College
- The John Leckie Academy
- The German School
- Staffordshire UniversityAcademy
- University of Gloucestershire
- The Manor Preparatory School
- National Basketball Performance Centre









# A Selection of DYNAMIK's Maintenance Projects

## Schools & Colleges

- Hartpury College
- Lambeth Academy
- Bulwell Academy
- Buttershaw Upper School
- Cardinal Heenan Catholic High School
- Royal Grammar School Newcastle
- Waldegrave School for Girls
- Oasis Academy John Williams
- New College Swindon
- Firvale School

## Universities

- Manchester Metropolitan University
- Southampton Solent University
- University of Bristol
- University of Bath
- University of Cambridge
- University of Worcester
- University of Essex

## Leisure Centres & Other

- Leicester Riders Arena
- English Institute of Sports Sheffield
- National Basketball Performance Centre
- Lime Kiln Leisure Centre
- Christie Miller Leisure Centre
- Robyn Park Sports Centre
- Worcester Arena
- The Regal & Jordan Courts
- Ashby St. Ledgers Village Hall





# | Official Sports Flooring Partners



| Supply Partners:

Members of:



Sports Facilities Group



Unit 10 Enterprise Trade Centre  
Roman Farm Road  
Bristol, BS4 1UN

0117 301 5120  
[info@dynamiksport.co.uk](mailto:info@dynamiksport.co.uk)  
[www.dynamiksportsfloors.co.uk](http://www.dynamiksportsfloors.co.uk)

# DYNAMIK