

DYNAMIK Active-Flex Interlocking Dual Density Activity Flooring

DYNAMIK



Active-Flex is an interlocking, multi-layer cushioned activity tile. The 4mm surface wear layer is a specially formulated rubber and synthetic mix which provides a non-porous surface for easy and hygienic cleaning. The surface also has a textured anti-slip finish.

The 16mm high density backing is designed to absorb impacts and combined with the rubber surface helps to prevent muscle strain and reduce the risk of injury. Each tile is 1m x 1m with interlocking edges for easy installation. Lightweight design allows them to be easily lifted and stored when not required.

Active-Flex Benefits

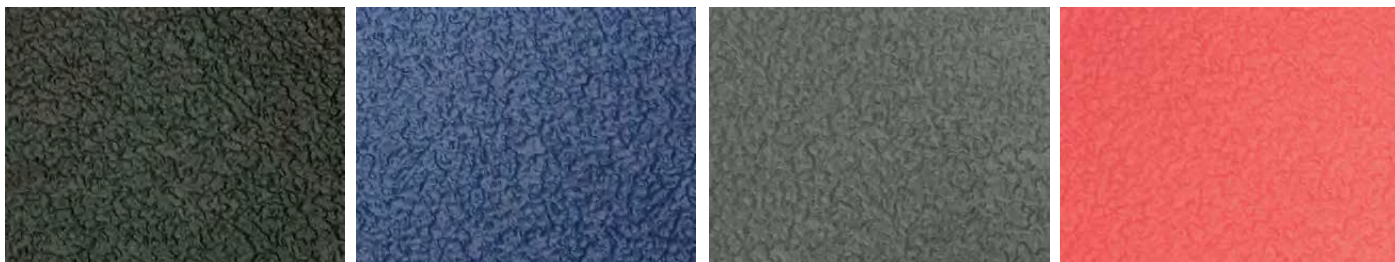
- Impact absorbing surface
- Extremely durable surface layer
- Easy to clean
- High density backing
- Fully interlocking for easy installation
- Excellent sound absorption

Technical Specifications

Tile Size	1.00m x 1.00m
Tile Thickness	20mm
Tile Weight	5.3kg/m ²

Active-Flex Colours

The tiles are available in Black, Blue, Grey or Red with matching bevelled ramps and corner blocks to create a safe, smart finish.



Official Partners

