

DYNAMIK

The Squash Court Specialist



DYNAMIK

With over 25 years' experience, DYNAMIK are leading providers of indoor sports solutions including sports walling, sports flooring, squash courts, track, and gym surfaces.

We provide the specification, supply and installation of premium sports systems, enabling us to offer solutions that perfectly meet both the needs of a facility and its users.

With ASB's world-renowned squash court systems, we are now able to bring high-quality squash facilities to the UK and Ireland. Together, we look forward to delivering world-class facilities and helping players and clubs achieve new heights of performance.

Official Partners



DYNAMIK - The Official ASB Distributor in the UK and Ireland

We are thrilled to announce that DYNAMIK – The UK's Sports Flooring and Walling Specialists have entered the squash industry and are now the official UK distributors for ASB Squash Courts.

This marks a significant milestone for DYNAMIK as we continue to expand our expertise throughout the sports and leisure industry.



What We Offer



- ASB Side and Front Walls
- ASB Squash Courts
- Glass Back Walls and Doors
- Floor Sanding, Repair and Replacement
- Squash Court Maintenance
- Squash Court Paint
- Squash Court Lighting
- Squash Court Floor Protection

Introduction

DYNAMIK Squash is an innovative squash court company that brings the latest technologies to the market in a game changing fashion.

We are a UK market leader in squash court design, construction, renovation and technology. All projects are treated equally and completed to the high quality standard our customers expect, from a small repair right up to building world leading ASB glass courts.



ASB Squash Courts

ASB Squash Courts are high-performance squash courts renowned for their quality, innovation, and design.

As the official UK and Ireland distributor of ASB Squash, DYNAMIK Squash provide state-of-the-art courts that are used by professional players and clubs around the world. These courts are designed to meet the highest standards of play, offering exceptional durability, safety, and precision.



ASB Walling Systems

Our walling systems are engineered to offer top-tier durability, playability, and visual appeal while adhering to the strict requirements of professional squash.

They offer a combination of advanced design, high-quality materials, and innovative technology, making them a top choice for both professional tournaments and recreational squash facilities.



ASB Glass Back Systems

The ASB Glass Back Systems are a premium feature that combines aesthetic appeal with functional performance. By offering enhanced visibility, improved lighting, and modern design, they help create a world-class squash environment for both players and spectators.

Whether for professional competitions or high-end recreational courts, the glass back system is an excellent choice for those looking to elevate their squash court experience.



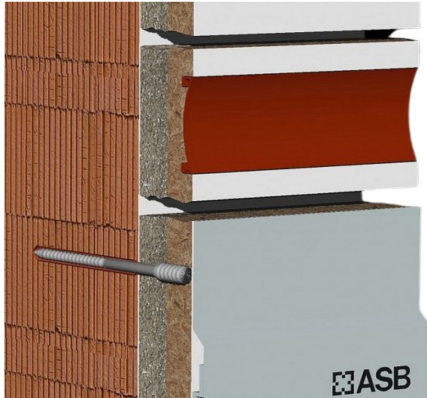
Renovation and Maintenance

Regular squash court maintenance is vital for clubs to ensure that their facilities remain safe, functional, and appealing. It not only boosts the player experience but also enhances the club's reputation, helping preserve the courts for long-term use.

DYNAMIK are committed to providing clubs with ongoing maintenance advice and support to ensuring quality remains a top priority.



ASB System40 and System100



System40

Squash court wall, thickness 40mm, anchored to the building wall.

The ASB System40 panel is securely fixed to the existing wall and aligned both vertically and horizontally. ASB technology ensures a consistent gap between the existing wall and the panels. This cavity is filled with fire-dried, compressed sand for added stability.



System100

Squash court self-standing wall, thickness 100mm.

The ASB System100 wall is a freestanding structure with a robust aluminium profile framework, covered on both sides with high-density boards. It's central cavity is filled on-site with fire-dried sand, ensuring the required surface hardness for optimal squash play.

Solid Wall Construction – The gap between the building wall and the ASB panel is completely filled with fire-dried sand, eliminating hollow spots, resulting in a solid wall with consistent and even rebounds, no matter where the ball strikes.

L-Shape Technology - ASB System40 and System100 uses the L-Shape Technology where the floor goes underneath the walls assuring the same ball bounce at every place of the wall/floor connection and preventing floor expansion issues caused by humidity changes in the environment.

Low-Maintenance and Easy to Clean – Features a smooth, easy-to-maintain surface that resists stains and scratches, minimising cleaning time and reducing maintenance costs.

Improved Playing Characteristics – The 18mm thickness of the ASB panels brings the ball closer to the fire-dried sand, increasing wall hardness and improving the playing experience.

Seamless Surface - The squash court walls feature a smooth, solid surface without joints or gaps.

Noise Reduction – Effectively reduces noise levels, creating a quieter and more focused playing environment.

New Install or Refurbishment – An excellent choice for both refurbishing existing courts and new constructions.

Efficient Installation – A quick and easy installation process for minimal downtime.



ASB Gamecourt and MoveableSideWall

The ASB GameCourt, made up of 2 ASB MoveableSideWalls, provides owners with a variety of flexible options to maximise the utilisation of their available space. By accommodating more users and attracting greater foot traffic, it significantly boosts the center's overall activity and revenue. This increased demand and higher utilisation makes the ASB GameCourt a smart and profitable choice for any facility looking to optimise its space.



Multi-Functional Use – Three ASB Game Courts (with 2 ASB Moveable SideWalls) are perfect for multi-functional use, allowing the space to be adapted for various sports and activities.

Versatile Usage – The ASB GameCourt supports a wide range of activities beyond squash, including doubles squash, badminton, basketball, football, volleyball, and gymnastics activities like aerobics and fitness training. This versatility allows the court to cater to various interests and sports, maximising the use of the space.

Flexible Court Configuration – The 100mm thick ASB MovableWall system, mounted on two single carriages, allows smooth movement along both the front and glass back walls, making it easy to adjust the court for different configurations.

Automatic Locking and Cable Integration – The movable wall automatically locks into place once it reaches its programmed position, ensuring secure operation.

Cost Efficient – The ASB Gamecourt, with MoveableSideWalls, is a cost effective solution. The movable wall allows a single court to be transformed into a doubles court, providing long-term flexibility in court dimensions.

Maximizes Space Utilization – Centre owners can maximise the use of their available space which minimises idle time during off-peak hours. By allowing for different activities throughout the day, the court maintains high usage rates and ensures the space is productive at all times.

Easy Setup and Transition – The ASB GameCourt is designed for a quick and easy transformation between different activities. Moving the side walls and adapting the space requires minimal effort, allowing for fast transition and increased efficiency for centre owners.



ASB PermanentGlassCourt

The ASB PermanentGlassCourt is a game changer for the squash market, addressing the common issue of plaster wall decay caused by continuous ball impact. This new system eliminates the need for regular maintenance and downtime, offering a virtually maintenance-free solution that's easy to clean.

With its innovative fitting system, installation is quick, efficient, and dust-free, ensuring minimal disruption to centre operations.



All Glass Surface – Squash courts experience continuous impact from the ball, causing wear on traditional surfaces. The ASB PermanentGlassCourt, however, can endure this impact indefinitely without damage or signs of wear.

Non-Reflective Matt Finish – The ASB PermanentGlassCourt wall features a matt finish that diffuses light, preventing direct reflections and eliminating reflections of players or objects behind the court.

Low Maintenance – The glass wall is easy to clean, with fewer marks from squash balls compared to plaster or panel walls. Ball marks can be removed easily with a sponge and water, thanks to the smooth surface that prevents rubber from bonding.

Quick and Clean Installation – The ASB PermanentGlassCourt is designed for fast, dust-free installation, even on uneven walls, ensuring minimal disruption to ongoing activities at the centre.

Consistent Reflection and Colour – Unlike other matt glass, ASB PermanentGlassWalls use a special glass treated with an optimised, automated process to ensure a consistent, uniform matt finish across all panels.

Design Flexibility – The court's colour is customisable with a special film coating, available in any non-metallic RAL colour. Logos, graphics, or images can also be incorporated on the wall.



ASB OutdoorSquashCourt

The ASB OutdoorSquashCourt is a durable, weather-resistant solution designed to bring the game of squash outdoors. With its innovative design and minimal maintenance requirements, it offers a versatile, easily installed option for venues looking to increase accessibility and attract new players.

This court provides a unique opportunity to boost the visibility of squash, making the sport more accessible and engaging to a broader audience.



Innovative Outdoor Design – The ASB OutdoorSquashCourt is specifically built to endure outdoor conditions, ensuring it withstands weather elements and other external factors while maintaining top-notch performance.

Increased Accessibility – This outdoor court brings squash to new audiences, offering more people the opportunity to engage with the sport and attracting new players to the game.

Weather-Resistant Durability – Designed for outdoor use, this court is built to endure varying weather conditions, offering long-lasting durability with minimal maintenance requirements.

Minimal Maintenance – The ASB OutdoorSquashCourt requires minimal upkeep, thanks to its durable materials and weather-resistant design, ensuring long-term performance with less effort.

Fast Installation with Simple Site Preparation - The ASB OutdoorSquashCourt features a fast installation process, with minimal site preparation needed, ensuring a quick and efficient setup with little disruption.

Weather-Resistant – Designed for outdoor use, this court is built to endure varying weather conditions.

Promotes a Positive Image – The visibility of outdoor courts helps improve squash's public image, making it more modern and accessible, and fostering greater interest in the sport.



Glass Back Walls and Doors

We are able to supply a range of Glass Back Walls and Doors from a variety of manufacturers. Providing bespoke doors and panels to suit your individual requirements. Designed for long-lasting durability, the ASB GlassBackWalls are built to withstand years of intense squash play, making them both unique and original. The panels are crafted from 12mm toughened safety glass, featuring etched stripes up to 60cm high on the inner side of the court.

Pro GlassBackWall

The ASB Pro GlassBackWall is a durable, impact tested solution featuring a robust aluminium frame and reinforced door area for long-lasting performance.

With customisable out-of-play lines and easy floor-to-ceiling connections, it combines safety, functionality, and a sleek aesthetic for professional sport environments.



Freestanding GlassBackWall

The ASB Freestanding GlassBackWall features a sturdy design, stabilised with 30cm deep glass fins and a fixed door made of 12mm safety glass.

It can consist of either two or four glass panels and offers flexibility with easily installed glass headpieces, while the floor is securely anchored with anodised aluminium and a fixed steel tube for added support.

Glass Doors and Bespoke Glass Panels

We supply durable, high-performance glass doors that offer excellent visibility and safety, while enhancing the overall look of any squash court.

Our bespoke glass replacement service covers everything from full back walls to individual panels. Each piece is custom made to ensure a perfect fit, restoring your courts appearance and performance with precision.



Floor Sanding, Repair and Replacement

We restore squash court floors through expert sanding to improve grip, appearance, and performance. For more severe wear or damage, we offer professional repairs or full floor replacements to ensure a durable, match-ready surface.

Sanding

We offer professional sanding to rejuvenate worn squash court floors, enhancing grip, appearance, and overall play quality. This process removes surface marks and evens out wear, extending the life of the flooring.



Repair

For courts with localised damage, we offer precise repair to individual boards and sections (which may include stabilising the under carriage) and therefore delaying the need for a full replacement.



Replacement

When a court's flooring is beyond repair, we offer comprehensive floor replacement services. This involves removing the old system and installing a brand-new, high-quality certified squash court floor that meets the latest standards for durability and performance.

The replacement offers a professional squash finish, restoring both the functionality and appearance of your court for years of high-level play.



Squash Court Maintenance



Patch Repairs

Patch repairs for plaster and panel walls are essential to maintaining a safe and high-quality playing surface for squash courts.

By addressing cracks, dents, and other damage promptly, clubs can keep their courts in optimal condition, ensuring a smooth and consistent playing experience. Regular maintenance will extend the life of the court and prevent more costly repairs in the future.

Play Lines

Over time, a squash court's lines can fade or wear due to constant play, which can affect gameplay. Re-lining a squash court is an essential maintenance task to ensure that the court markings remain clear, accurate, and compliant with official standards.

DYNAMIK offer remarking services and a variety of colour options to customise your squash court lines, ensuring both aesthetic appeal and clear, accurate markings.



Court Cleaning

Regular plaster and panel squash court cleaning is essential to maintain a safe, high-performance environment for players. Clean floors, walls, and surfaces not only enhance the appearance of the court but also ensure optimal player safety and help to prevent wear.

Routine cleaning preserves the longevity of the court, reduces the risk of injury, and provides a consistently smooth, professional playing experience.



Glass Wall and Door Furniture & Fittings

Fittings for Squash Court Glass Walls and Doors are critical for ensuring the structural integrity, safety, and functionality of the squash court. These fittings provide the necessary support for the glass panels and ensure smooth operation of doors.

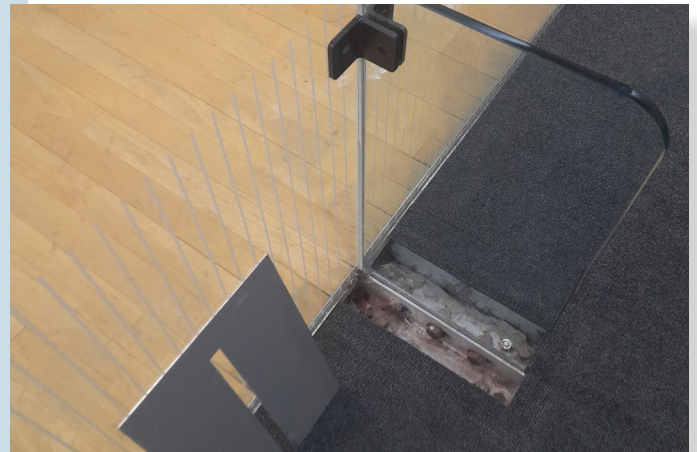
DYNAMIK offer high quality furniture and expertly designed fittings to, not only enhance the court's aesthetic appeal, but also to provide a secure, professional environment for both players and spectators.



Glass Check & Re-alignment

Regular glass checks and re-alignment are essential for maintaining the safety and integrity of your squash court. Over time, glass panels can shift or develop minor issues that affect their performance and appearance.

DYNAMIK provides expert services to inspect, realign, and secure glass walls and doors, ensuring they remain perfectly aligned and stable. This maintenance ensures a safe, professional environment for both players and spectators, enhancing the overall playing experience.



Tin Repair and Replacement

Over time, tin panels and accessories may become damaged due to impacts, wear, or environmental factors, compromising both the aesthetics and safety of the court.

DYNAMIK offer expert repair solutions and also replacement tins, both fixed height and height adjustable, to suit your needs.



Squash Court Paint

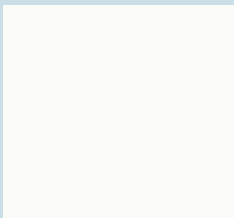
Our high-elasticity squash court wall paint is flexible and prevents micro-particle disintegration upon impact, unlike conventional paints. It protects walls, ensuring durability and premium quality.

Available in various colours, ASB paint also complements ASB RainbowCourts, a globally recognised training concept that enhances squash gameplay.

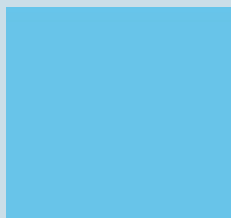
Ideal for new courts and renovations, the paint works with all common surfaces while refreshing the court's look.



Colour Examples



White



Light Blue



Green



Salmon

- Especially developed and designed for squash walls
- Great solution for renovation works
- Easy to apply with no strong odour
- Available in multiple RAL colour shades
- Excellent adhesion to common squash wall surfaces
- High sustainability
- Resistant to chemicals, solvents, coolants and cleaning agents
- Scratch and abrasion resistant
- Humidity resistance
- Successfully used all over the world and in different climate zones

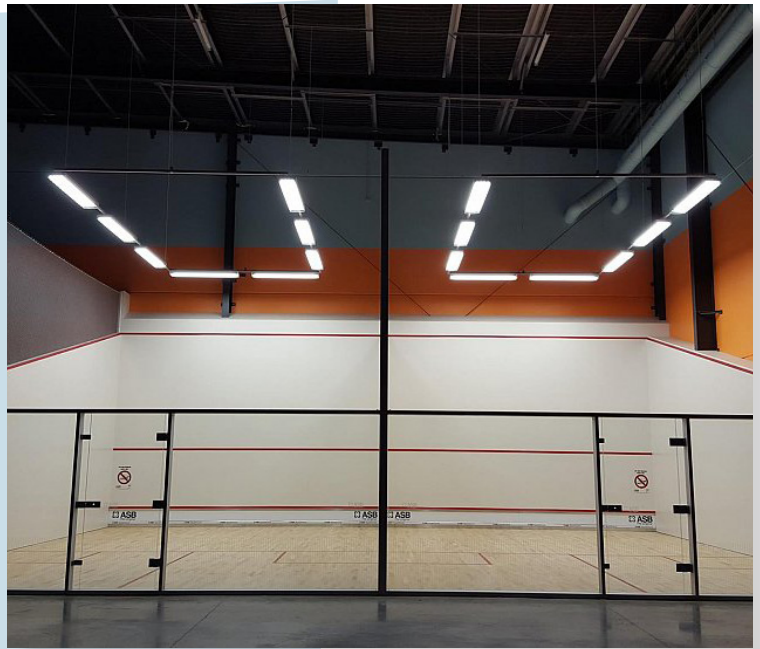


Squash Court Lighting

Squash court lighting is often overlooked but is crucial to the game. According to WSF court specification rule 11, courts should be lit by artificial light with a minimum illumination of 300 lux at 1m above floor level. However, this level significantly affects gameplay, making it difficult for players to track the ball.

ASB have developed a lighting layout that ensures a minimum of 500 lux at 1m above the parquet floor.

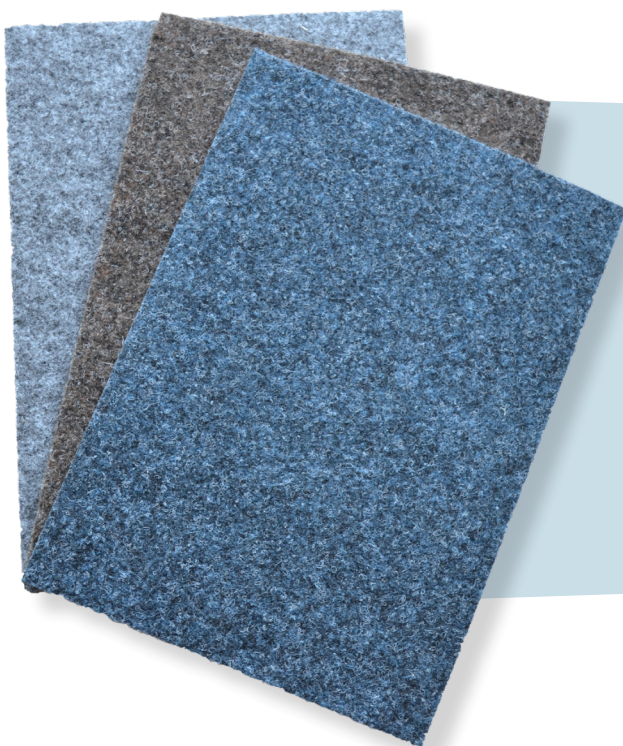
Designed for optimal visibility, it provides consistent lighting across the entire court, including all four corners. The lighting system is controlled externally via a timer or manual switch.



Squash Court Floor Protection

As squash courts are increasingly used for a range of non-sporting purposes, protecting the floor has never been more important. Without sports surface protection, your floor could easily become scratched and damaged, diminishing not only its appearance but also its long-term performance. Our giant carpet tiles have been specially designed to not only protect your squash court floor but also transform your court into a versatile space suitable for meetings, storage, and other off-court activities.

The combination of a high-density wear layer and polymer backing offers exceptional protection and leaves no dirty bitumen scuff marks like commercial tiles.



Benefits

- Designed specifically for sports floors
- Superior indentation resistance
- Scuff-free, high-grip backing (no bitumen)
- No adhesive or tape required
- Available in a variety of colours
- Fast-track delivery available

| Official Sports Flooring Partners:



| Supply Partners:



| Members of



0117 301 5120
info@dynamiksport.co.uk
www.dynamiksportsfloors.co.uk

