

# **DYNAMIK**

▀ Sports Flooring ▀ Acoustic Walling

▀ Track & Gym ▀ Maintenance & Protection





With over 25 years' experience, DYNAMIK are leading UK providers of indoor sports flooring, track, gym and acoustic walling solutions.

We provide the design, specification, supply and installation, enabling DYNAMIK to offer solutions that perfectly meet both the needs of a facility and its users.

Our sprung systems range from high performance LED glass courts, to timber or synthetic surfaces such as Sport Linoleum, Vinyl, Rubber or Seamless Polyurethane.

Whether it's Basketball, Netball, Squash, Badminton, Futsal, Wheelchair Sports, High Performance Weight Training or Community use, DYNAMIK have the solution.

## Official Sports Flooring Partners





# What We Offer

- Design, Specification, Supply & Installation
- Comprehensive Choice of Playing Surfaces
- Choice of Sprung Undercarriage Systems
- New Build or Refurbishment Options
- Acoustic & Impact Gym Flooring
- ASB Squash Court Design and Construction
- Acoustic & Impact Sports Wall Panelling
- Aftercare & Maintenance Services
- CAD Line Marking & Logo Court Design
- Mondo Indoor Athletic Tracks



## Our Credentials

- Over 25 Years Supporting British Sport
- National Governing Body (NGB) Partnerships
- Sports Facilities Group (SFG) and SAPCA Member
- Over 130 Sports Floors Installed Per Year
- EN 14904 Compliant Systems
- In-House Design and Installation Expertise
- RIBA Product Selector, BIM & NBS Source
- DBS, HMP, MOD & Local Authority Certified



"DYNAMIK pledge to support British sport by giving back through our NGB partnerships"

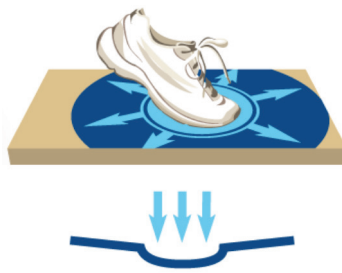




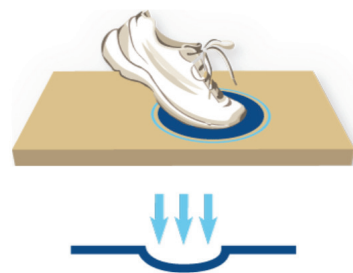
# Sports Flooring Options



**Area Elastic Systems** deflect an impact over a wide surface area, providing the highest levels of shock absorption and comfort. This is the best solution for multi-sports, offering high levels of performance and indentation resistance, therefore making it more suitable for wheelchair sports and non-sporting activities. British Wheelchair Basketball recommend Area Elastic Systems within their latest facilities document.



**Combined Elastic Systems** are Area Elastic systems finished with a Point Elastic foam backed surface. Combined Elastic Systems provide a slow rolling resistance and are therefore not ideal for wheelchair sports. They are not to be used for ESFA/DfE funded projects within sports or activity areas. Combined Elastic Systems create high levels of comfort during events which do not have a requirement for indentation resistance.



**Point Elastic Foam-Backed Surfaces** absorb shock at the point of impact. They are best suited to low levels of multi-sport performance.

Please note - many foam backed surfaces are not ideal for wheelchair sports and are not to be used for ESFA/DfE sports or activity areas, according to their latest outline specification.

## Classification of Sports Flooring

Area, Combined and Point Elastic sports flooring must meet the European Standard – EN 14904. In doing so, they are further classified based on their shock absorption and vertical deformation performance as A3 or A4 - Area Elastic Systems, C3 or C4 - Combined Elastic Systems, or P1, P2 or P3 - Point Elastic Surfaces.

The tables below show the shock absorption and vertical deformation characteristics that each type of floor system must meet under the EN 14904 standard. Based on this table an A4 or C4 floor provides the highest performance. All combined elastic floors however come at a premium in terms of cost, whilst also having the limitations of a point elastic cushioned surface in terms of indentation resistance and durability.

Shock absorption and vertical deformation are not the only characteristics of the EN 14904 standard, we offer a range of sports flooring options which are Sport England compliant and meet the European Standard.

**Shock Absorption (%)**

	Area Elastic (A)	Combined Elastic (C)	Point Elastic (P)
1			≥25 <35
2			≥35 <45
3	≥40 <55	≥45 <55	≥45
4	≥55 <75	≥55 <75	

**Vertical Deformation (mm)**

	Area Elastic (A)	Combined Elastic (C)	Point Elastic (P)
1			≤2.0
2			≤3.0
3	≥1.8 <3.5	≥1.8 <5.0	≤3.5
4	≥2.3 <5.0	≥2.3 <5.0	

- The Education and Skills Funding Agency (ESFA) are the UK's largest independent specifiers of sports and activity flooring. Their outline specification requires the use of only A3/A4 sprung flooring within their sports and activity areas.
- The National Governing Bodies (NGBs) have their own requirements and preferences, please contact DYNAMIK directly for their latest sports flooring guidelines.



# | Sports Flooring Options

Before choosing your flooring system, there are a number of considerations:

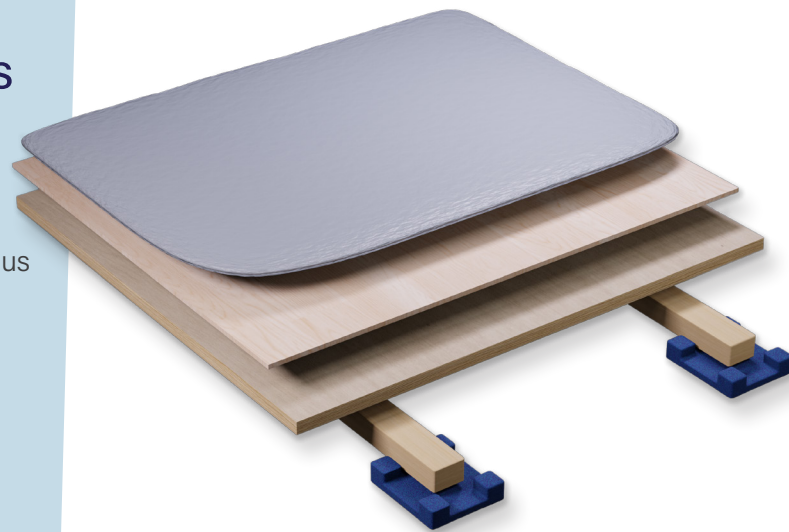
- Single Sport or Multi-Sport Usage?
- Portable or Retractable Seating?
- Surface Protection Requirements?
- Wheelchair Use - Equality Act Compliant?
- Sporting or Non-Sporting Usage?
- Performance Requirements?
- ESFA/DfE Compliance?
- Maintenance and Aftercare Budget?

## Flexi-Beam Plus

This is a sprung area elastic sports floor incorporating Flexi-Beams to support a counter floor and load distribution panel. This system can be packed and levelled to take out variations in the sub floor or slab, thus removing the need for a levelling screed.

The structure of the Flexi-Beam Plus system allows for underfloor heating and insulation to be incorporated if required.

This system accommodates a range of solid synthetic playing surfaces which are ideal for both sporting and non-sporting activities.



A minimum void (drop in screed) of 85mm is required to pack and level the system.

## Flexi-Beam Elite

This is a sprung area elastic sports floor incorporating Flexi-Beams which support a 22mm premium sports board. The system can be packed and levelled to take out variations in the structural slab or sub floor.

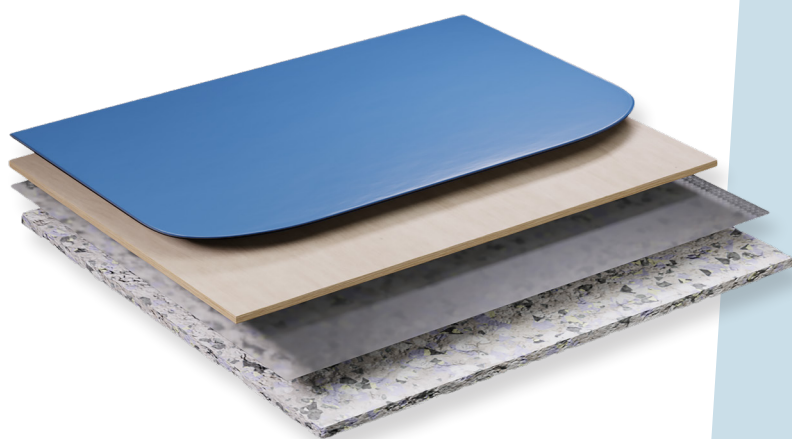
The Flexi-Beam Elite sprung timber system can accommodate underfloor heating and insulation if required.

Given it can be packed and levelled off a structural slab, the requirement for an additional levelling screed is avoided.



A minimum void (drop in screed) of 85mm is required to pack and level the system.





Total Floor Thickness: 22 mm

## Komfort Plus

This is an ultra low profile, high comfort sprung system. It can be installed onto a level screed or surface and can accommodate a variety of solid synthetic playing surfaces including Sport Vinyl, Sport Linoleum, Sport Polyurethane or Sport Rubber.

The construction of the Komfort Plus system consists of an interlocking load distribution module installed onto a noise reduction acoustic film and then a comfort-based high density elastic layer.

## Komfort Elite

This is a low profile sprung area elastic system which can be installed onto a level screed or surface incorporating a premium engineered sports board.

The sprung system consists of a comfort-based elastic layer over which a load distribution board is installed prior to the installation of the premium sports board. Consistent sports performance is guaranteed as every part of the surface is equally supported by the high density elastic layer.



Total Floor Thickness: 35 mm



Overall Thickness: 9 mm

## Point Elastic

This point elastic sports surface comprises of a rubber crumb pad finished with a seamless polyurethane surface.

Seamless polyurethane brings the advantage of seamless installation. The surface finish will require periodic re-painting throughout its life in order to maintain its appearance and slip resistance.

The depth of the rubber crumb can be altered to achieve P1, P2 or P3 performance criteria.



# | Surface Finishes

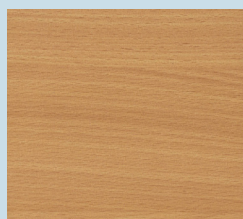
As Official Supply and Technical Partners to many National Governing Bodies, DYNAMIK are able to advise key decision makers and clients on the best sports flooring solutions; from grassroots, through to international level competition.

Your first choice may be whether to choose a timber or synthetic finish. Many people prefer the aesthetic appearance of timber, however associated with this choice comes greater maintenance responsibilities.

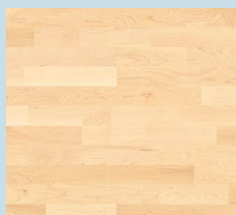
Our systems are available in a variety of wood species, including:



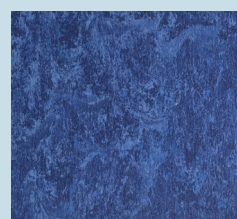
European Oak



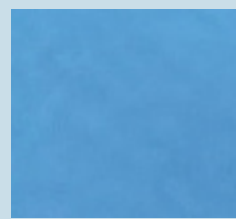
Beech



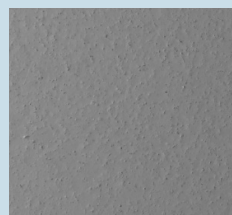
Canadian Maple



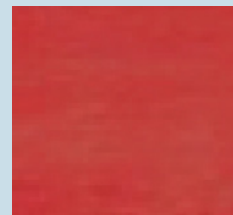
Linoleum



Vinyl



Polyurethane (PU)



Rubber



# | Specialist Systems

## **ASB Glass Floor** - LED Video Court

This is the most advanced flooring system available in the world of sport, meeting the highest levels of performance and has been used in some of the worlds largest sporting events. Each sport can incorporate dedicated LED line marking or become an interactive player tracking system as well as offering crowd engagement and marketing opportunities.



## **Mondo** - Indoor Athletic Track

Specifically designed for superior athletic performance, Mondo tracks are world-class and provide the perfect performance for both high-speed sprint events and low-speed middle and long-distance events.



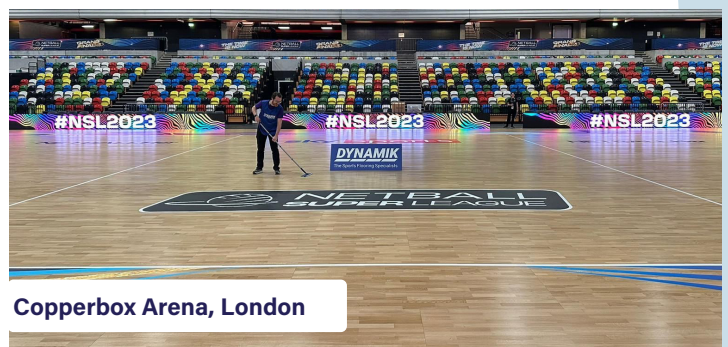
## **DYNAMIK** - ASB Squash Courts

DYNAMIK are proud to partner ASB Squash Courts, delivering via our latest brand Melior Squash. ASB understand Squash like no other manufacturer, providing an array of solutions to suit any requirement. ASB integrate world-class technology and performance, experienced by players throughout the world for more than 60 years.



## **DYNAMIK** - Portable Court

Achieving FIBA Level 1, Basketball England have chosen DYNAMIK as their official portable court provider. The court's superior performance has also been identified by England Netball, Basketball Wales, and British Wheelchair Basketball who have chosen to use the DYNAMIK portable court for international events.



## **DYNAMIK** Acoustic Gym Flooring

Premium acoustic impact systems perfectly suited to fitness suites and gyms with specialist weight training requirements. Designed and tested to maximise safety, durability, functionality and visual appearance as well as providing high levels of acoustic reduction and vibration isolation.

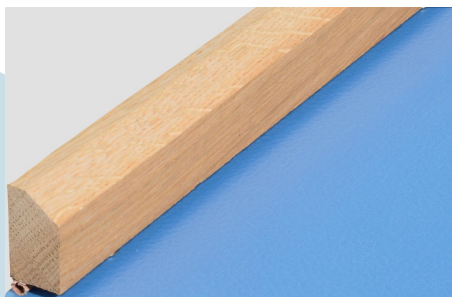




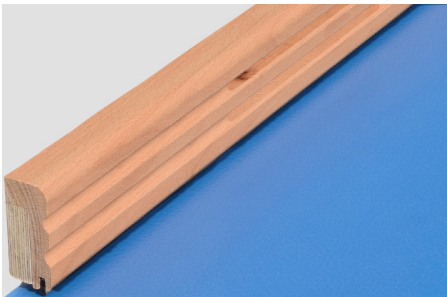
# | Specialist Flooring Accessories

Complimenting our sports flooring, DYNAMIK have developed a range of accessories and services to enhance the quality of your sports floor.

Solid Wood Sports Skirting concealing the expansion gap around the perimeter of the hall.



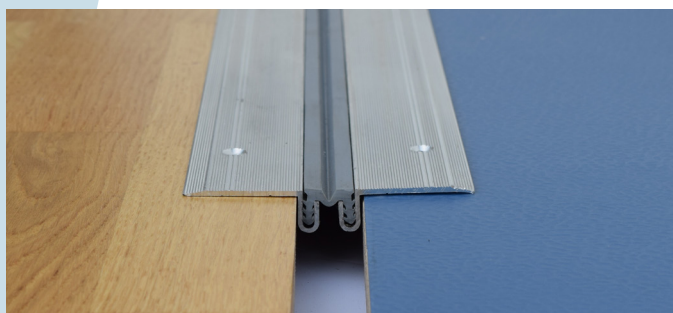
Standard Multi-use



Ventilated



Hockey



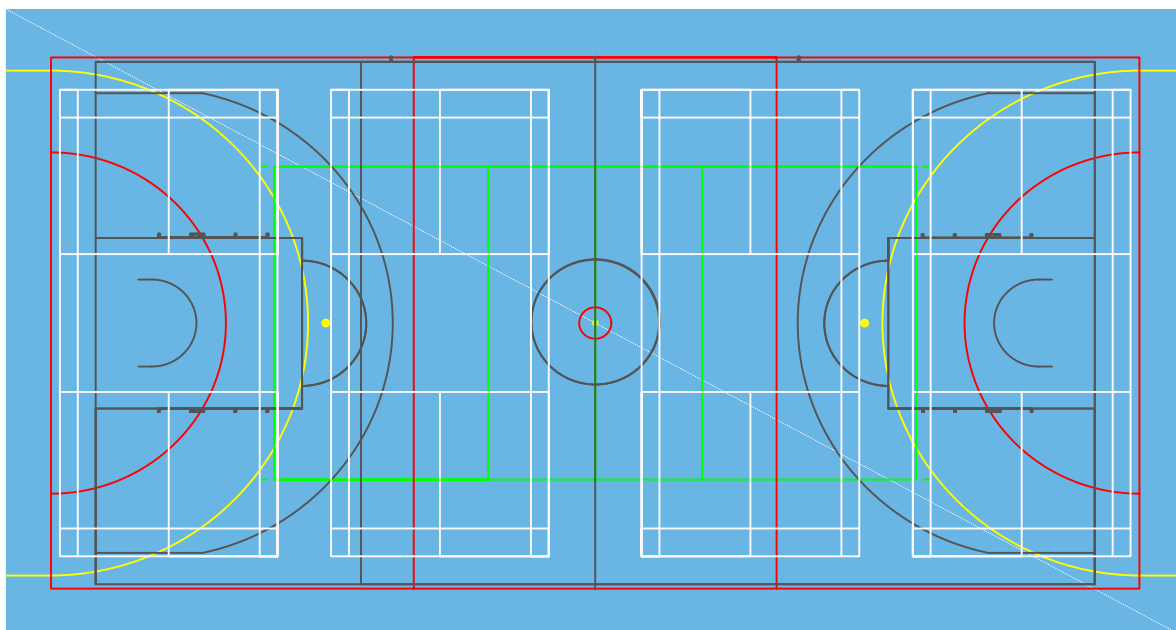
Threshold Strip for doorways or adjacent surfaces.



Sports equipment access covers.

## Line Marking

DYNAMIK carry out line marking design and application as well as future re-line marking when required. If your sports floor needs aftercare and maintenance, DYNAMIK provide the correct solution.



# | DYNAMIK Aftercare & Maintenance



## Floor Protection

Floor protection should be considered to maintain the condition of your sports floor and to prolong its life.

DYNAMIK Giant Carpet Tiles are the most effective solution to protect your floor whilst also improving the acoustics.

The aesthetics of the hall will be transformed, making the space far more functional for non-sporting social events or during examination periods where desks and chairs are used in the hall, providing protection from potentially damaging footwear or equipment.

## Maintenance

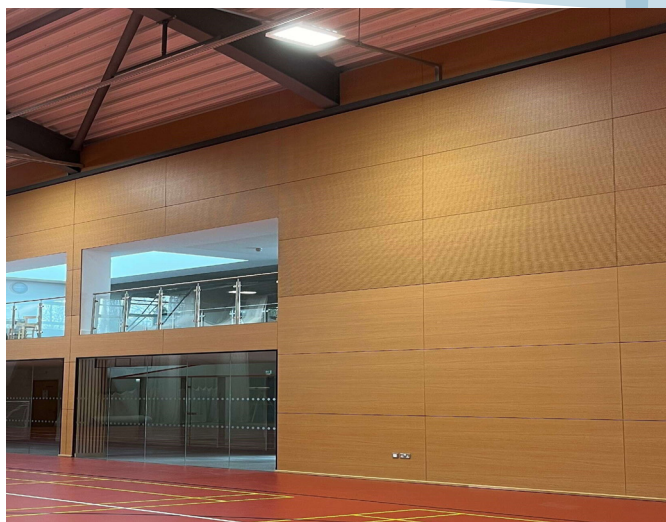
In addition to providing detailed Aftercare and Maintenance guidance, DYNAMIK offer a multitude of services to help preserve or refurbish your sports floor. This can include a professional deep clean, a sand and re-seal, plus, the application of new line marking and court logos.



## Acoustic Sports Wall Panelling

DYNAMIK Internal Acoustic and Impact Sports Wall Panelling reduces reverberation and acoustic levels.

The Solid & Perforated Wall panels are available in a range of wood effects & colours. They compliment the sports floor to give a complete solution for the internal finishes of your sports hall and create an environment that is aesthetically pleasing and functional.





# Case Study

## The Black Prince Trust Chooses DYNAMIK

The Jordan and Regal Courts, owned by The Black Prince Trust in South London, were in need of the DYNAMIK touch.

The infamous facilities are situated in The Black Prince Community Hub in Lambeth, a charity that works with other commercial organisations to offer sessions and sports programmes to the local community. The Regal & Jordan courts are dedicated, state-of-the-art indoor basketball facilities that receive thousands of visitors each year and serve to encourage and facilitate players from beginners through to performance athletes.

### The Jordan Court

Repairs were carried out to the Jordan Court before completing a full sand lacquer re-seal, and re-line marking.



The new court lines incorporate the Nike Jump Man Logo.

### The Regal Court

The Regal Court underwent a larger renovation. As there were a few dead spots around the floor, the decision was made to replace it, and so, DYNAMIK uplifted and disposed of the old timber surface.



High sports performance, durability and timber stability were key factors to consider when supplying and installing this court. For this reason, DYNAMIK chose to install their Flexi-Beam Elite sprung system, finished in the 22mm Engineered Oak board.

With new court lines applied, the black borders and key infills emphasised the inner court area. The addition of The Regal and Nike Logos complimented this striking refurbishment.







# | A Selection of DYNAMIK's Projects

## Universities

- Cardiff Metropolitan University
- Manchester Metropolitan University
- Southampton Solent University
- University of Bath
- University of Brighton
- University of Cambridge
- University of Chichester
- University of East London (UEL)
- University of Essex
- University of Gloucestershire
- University of Liverpool
- University of Oxford
- University of St Andrews
- University of Worcester

## Schools

- ACS Egham International School
- Ashlyns School
- Barking Abbey School
- Beechen Cliff School
- Bohunt School
- Box Hill School
- Don Valley Academy
- Gateshead Academy for Sport
- Haberdashers' Monmouth School for Girls
- Kings College School
- Lockers Park School
- Loretto School
- Merchant Taylors' School
- Northampton School for Boys
- Repton School
- St George's College Weybridge
- The Marist Schools

## Colleges

- Barking & Dagenham College
- Bolton Community College
- Brighton College
- Cheltenham Ladies' College
- Ealing & Hammersmith College
- Emmanuel College
- Hartpury College
- Jane Austen College
- Myerscough College
- Newbold College
- Perth College
- South Gloucestershire and Stroud College
- Torquay College

## Leisure Centres & Other

- British Basketball League (BBL) Portable Courts
- Bury Roller Skating Arena
- Coronation Square London Arena
- Cosway St. Church
- Derby Arena
- Devon & Cornwall Police HQ
- England & Wales Netball Portable Courts
- English Institute of Sport
- Five Rivers Leisure Centre
- Hull and East Riding Squash Club
- Leicester Riders Arena
- National Basketball Performance Centre
- National Centre for Circus Arts
- Newcastle Eagles Community Arena
- Nationwide Football High Performance Gym Projects
- Onside Youth Zone Nationwide Projects
- R.A.F. Brize Norton



# Official Sports Flooring Partners



## Supply Partners:



## Members of:



Unit 10 Enterprise Trade Centre  
Roman Farm Road  
Bristol, BS4 1UN

0117 301 5120  
info@dynamiksport.co.uk

