

# **DYNAMIK**

▀ Sports Flooring ▀ Acoustic Walling

▀ Track & Gym ▀ Maintenance & Protection





With over 20 years' experience, DYNAMIK are leading UK providers of indoor sports flooring solutions, gym and fitness flooring.

We provide the design, specification, supply and installation, enabling DYNAMIK to offer solutions that perfectly meet both the needs of a facility and its users.

Our sprung systems range from high performance LED glass floors, to timber or synthetic surfaces such as Sport Linoleum, Vinyl, Rubber or Seamless Polyurethane.

Whether it's Basketball, Netball, Tennis, Badminton, Futsal, Wheelchair Sport, High Performance Weight Training or Community use, DYNAMIK has the solution.

## Official Sports Flooring Partners



# | What We Offer

- Design, Specification, Supply & Installation
- Comprehensive Choice of Playing Surfaces
- Choice of Sprung Undercarriage Systems
- New Build or Refurbishment Options
- Gym and Fitness Flooring
- Impact-Resistant Surfaces & Acoustic Systems
- Acoustic Sports Wall Panels
- Maintenance & Aftercare Services
- CAD Line Marking & Logo Court Design
- Indoor Athletic Tracks & Biometric Zones



## | Our Credentials

- Over 20 years supporting British Sport
- Member of the Sports Facilities Group (SFG)
- SAPCA Member
- Over 130 Sports Floors Installed Per Year
- Sport England & EN 14904 Compliant Systems
- In-House Design and Installation Expertise
- RIBA Product Selector, BIM & NBS Source
- DBS Certified, HMP, MOD & Local Authority Approval



DYNAMIK offer surfaces that are Sport England compliant and meet the European Standard for Indoor Sports Flooring



# | Sports Flooring Options



**Area Elastic Systems** deflect an impact over a wide surface area, providing the highest levels of shock absorption and comfort. This is the best solution for multi-sports, offering high levels of performance and indentation resistance, therefore making it more suitable for wheelchair sports and non-sporting activities.

*British Wheelchair Basketball recommend Area Elastic Systems within their latest facilities document.*



**Combined Elastic Systems** are Area Elastic systems finished with a Point Elastic foam backed surface. Combined Elastic Systems provide a slow rolling resistance and are therefore not ideal for wheelchair sports. They are not to be used for ESFA funded projects within sports or activity areas.



**Point Elastic Foam-Backed Surface** absorb shock at the point of impact. They are best suited to low levels of multi-sport performance.

*Please Note - Many Foam Backed surfaces are not ideal for wheelchair sports and are not to be used for ESFA sports or activity areas, according to their latest outline specification.*

## | Classification of Sports Floors

Area, Combined and Point Elastic sports floors must meet the European Standard – BS EN 14904. In doing so they are further classified based on their shock absorption and vertical deformation performance as A3 or A4 - Area Elastic Systems, C3 or C4 - Combined Elastic Systems, or P1, P2 or P3 - Point Elastic Surfaces.

The tables below show the shock absorption and vertical deformation characteristics that each type of floor system must meet under the BS EN 14904 standard. Based on this table an A4 or C4 floor provides the highest performance. All combined elastic floors however come at a premium in terms of cost, whilst also having the limitations of a point elastic surface in terms of indentation, resistance and durability.

Shock absorption and vertical deformation are not the only characteristics of the BS EN 14904 standard, we offer a range of sports flooring options which are Sport England compliant and meet the European Standard.

**Shock Absorption (%)**

	Area Elastic (A)	Combined Elastic (C)	Point Elastic (P)
1			≥25 <35
2			≥35 <45
3	≥40 <55	≥45 <55	≥45
4	<b>≥55 &lt;75</b>	≥55 <75	

**Vertical Deformation (mm)**

	Area Elastic (A)	Combined Elastic (C)	Point Elastic (P)
1			≤2.0
2			≤3.0
3	≥1.8 <3.5	≥1.8 <5.0	≤3.5
4	<b>≥2.3 &lt;5.0</b>	≥2.3 <5.0	

- The Education and Skills Funding Agency (ESFA) are the UK's largest independent specifiers of sports and activity flooring. Their outline specification requires the use of A3/A4 sprung flooring within their sports and activity areas.
- The National Governing Bodies (NGBs) have their own requirements and preferences, please contact DYNAMIK directly for their latest sports flooring guidelines.



# | Sports Flooring Options

Before choosing your flooring system there are a number of considerations:

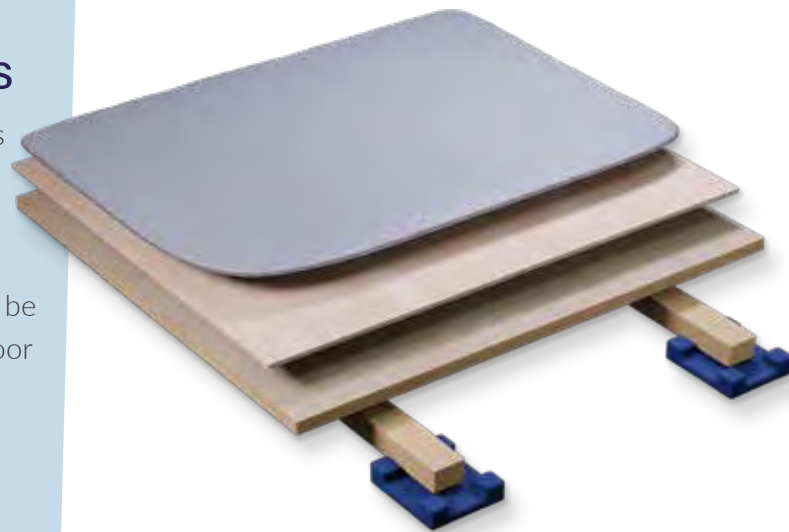
- Single Sport or Multi-Sport Use?
- Portable or Retractable Seating?
- Giant Carpet Tile protection?
- Wheelchair Use - Equality Act/BWB compliance?
- Community Use or Non-Sporting Usage?
- Sports Performance Requirements?
- ESFA Compliance - A3/A4 only
- Maintenance Budget? - Timber vs Synthetic

## Flexi-Beam Plus

This is a sprung area elastic sports floor. It incorporates Flexi beams which support a counter floor and load distribution panel to accommodate a range of solid synthetic playing surfaces including Sport Vinyl, Sport Linoleum, Sport Polyurethane and Sport Rubber. It can be packed and levelled to take out variations in the sub floor or slab, thus removing the need for a levelling screed.

The structure of the Flexi-Beam Plus system allows for underfloor heating and insulation to be incorporated if required.

With a range of solid synthetic finishes it is ideal for both sporting and non-sporting activities.



A minimum void (drop in screed) of 85mm is required to install, pack and level the system.

## Flexi-Beam Elite

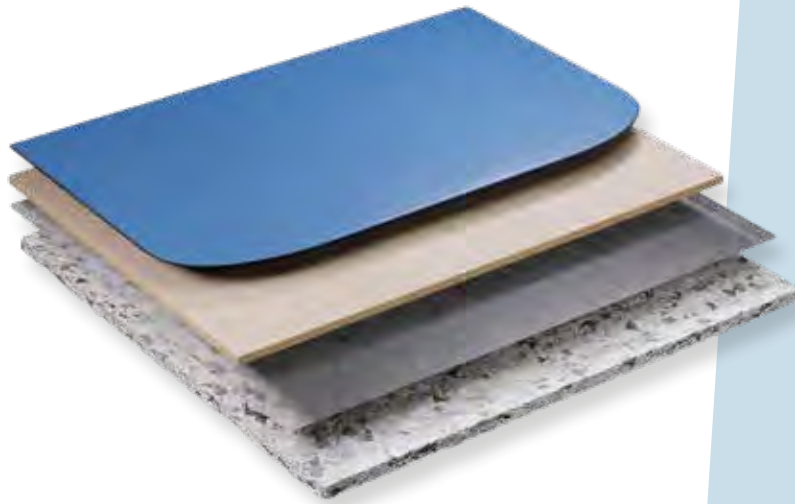
This is a cradle and beam sprung area elastic sports floor. It incorporates Flexi-Beams which support a 22mm premium engineered sports board. The system can be packed and levelled to take out variations in the sub floor.

The structure of the Flexi-Beam Elite system incorporates Flexi-Beams to provide a stable base for the 22mm board and allows for underfloor heating and insulation to be incorporated if required.

Given it can be packed and levelled off a structural slab, the requirement for a levelling screed is avoided.



A minimum void (drop in screed) of 85mm is required to install, pack and level the system.



Total Floor Thickness: 22.03 mm

## Komfort Plus

This is an ultra low profile, high comfort sprung system. It can be installed onto a level SR1 screed (+/- 3mm over 2m) to accommodate a variety of solid synthetic playing surfaces including Sport Vinyl, Sport Linoleum, Sport Polyurethane or Sport Rubber.

The construction of the Komfort Plus system consists of a load distribution panel installed onto a comfort-based elastic layer. Consistent sports performance is guaranteed as every part of the surface is equally supported by the high density elastic layer. The ultra low construction height of the system makes it ideal for refurbishments and with a range of solid synthetic finishes it is suited for both sporting and non-sporting activities.

## Komfort Elite

This is a low profile sprung area elastic system. It can be installed onto a level SR1 screed (+/- 3mm over 2m) and incorporates a premium engineered sports board.

The system consists of a comfort-based elastic layer over which a load distribution board is installed prior to the installation of the premium sports board. Consistent sports performance is guaranteed as every part of the surface is equally supported by the high density elastic layer.



Total Floor Thickness: 34.63 mm



Overall Thickness: 9 mm

## Point Elastic

This point elastic sports surface comprises of a rubber crumb pad finished with a seamless polyurethane surface.

Seamless polyurethane brings the advantage of seamless installation. The surface finish will require periodic re-painting throughout its life in order to maintain its appearance and slip resistance.

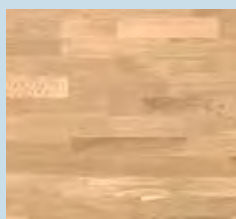
The depth of the rubber crumb can be altered to achieve P1, P2 or P3 performance criteria.

# | Surface Finishes

As the Official Supply and Technical Partner for the governing bodies of Basketball England, England Netball, Basketball Wales, British Wheelchair Basketball, the British Basketball League (BBL) and England Handball, we are able to advise key decision makers and clients on the best sports flooring solutions, from grass roots, through to international level.

Your first choice may be whether to choose a timber or synthetic finish. Many people prefer the aesthetic appearance of timber, however associated with this choice comes greater maintenance responsibilities.

Our systems are available in a variety of wood species including:



European Oak



Beech



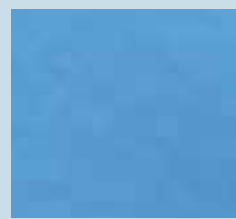
Canadian Maple

We offer a range of synthetic playing surfaces.

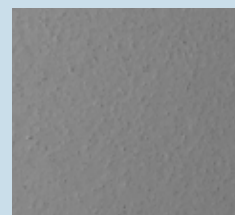
Each surface option has various features and benefits which require detailed consideration to meet your specific needs:



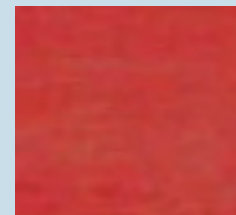
Sport Linoleum



Sport Vinyl



Sport Seamless Polyurethane



Sport Rubber

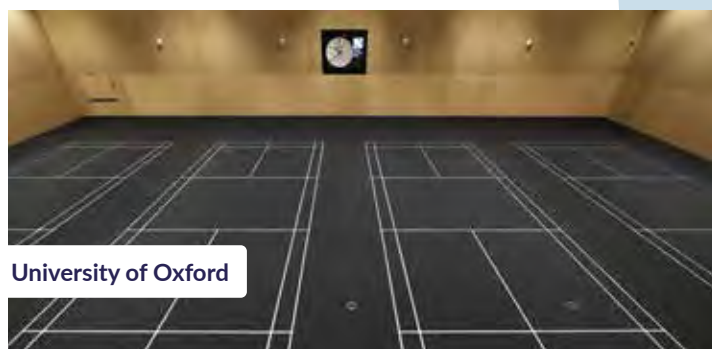




# | Specialist Sports Floors

## **ASB Glass Floor** - A4 Area Elastic Floor

The ASB GlassFloor is the most advanced flooring system available. The custom-made glass surface delivers a floor ideal for sport at the highest level. The floor incorporates LED line markings which can be switched on or off for each sport and can incorporate messages, scoreboards or become one giant screen. It has a life span far in excess of any other floor system and low maintenance requirements.



University of Oxford

## **Mondotrack** - Indoor Running Track

Specifically designed for superior athletic performance, Mondotrack provides the perfect combination of energy return and comfort for both high-speed sprint events and low-speed middle and long-distance events. It also guarantees the perfect combination of shock absorption and rebound elasticity for jump events.



English Institute of Sport, Sheffield

## **DYNAMIK** - Biometric/Plyometric

Our range of easy to clean, hygienic, non-slip rubber flooring solutions are specifically designed for plyometric and biometric training areas. With superior durability, high indentation resistance and exceptional shock absorbency they offer a high performance solution.



University of St Andrews, Scotland

## **DYNAMIK** - Portable Court

Our portable court has FIBA Level 1 approval and is the official portable court of Basketball England. The court's superior performance has also been identified by England Netball and Welsh Netball who have chosen to use the DYNAMIK portable court for international events.



Liverpool Arena, Liverpool

## **DYNAMIK** - Fitness & Gym Flooring

Premium fitness flooring systems perfectly suited to fitness suites and gyms with specialist weight training areas. Designed and engineered to maximise comfort, durability, functionality and visual appearance as well as providing high levels of acoustic reduction and vibration isolation.



Brighton College, Brighton

# | Specialist Flooring Accessories

Alongside our sports floors DYNAMIK have developed a range of accessories and services to complement as well as preserve the outstanding quality of your floor.

**Solid Wood Sports Skirting** Concealing the expansion gap around the perimeter of the hall.



**Standard Multi-use**



**Ventilated**



**Hockey**



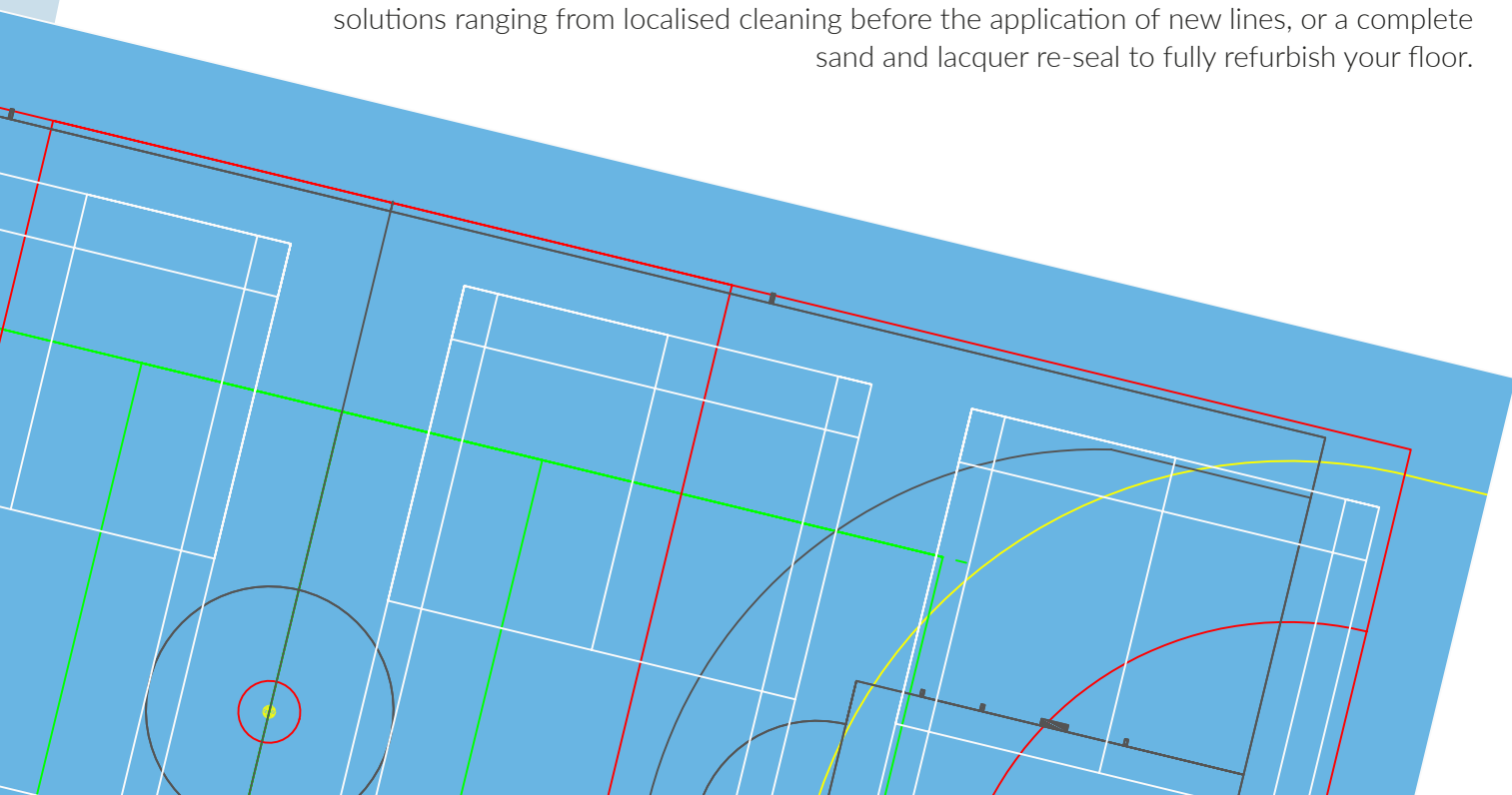
**Threshold Strip** installed at doorways or where the floor meets an adjacent surface.



**Apparatus Covers & Frames** to allow you to integrate sports equipment more efficiently.

## Line Marking

DYNAMIK carry out the initial line-marking design as well as periodic re-marking when required due to wear and tear. If your existing sports floor needs re-line marking, we offer solutions ranging from localised cleaning before the application of new lines, or a complete sand and lacquer re-seal to fully refurbish your floor.





# DYNAMIK Maintenance & Aftercare Services



## Floor Protection

Floor protection should be considered to maintain the condition of your sports floor and to prolong its life.

DYNAMIK Giant Carpet Tiles are the most effective solution to protect your floor while also improving the acoustics.

The aesthetics of the hall will be enhanced making the space far more functional for non-sporting social events, during examination periods when desks and chairs are used in the hall and protection from potentially damaging footwear or equipment.

## Maintenance

As well as providing detailed Aftercare and maintenance instructions, DYNAMIK offer services to help preserve or refurbish your sports floor. This includes a scrub etch and re-seal or deep sand and lacquer re-seal followed by a new set of line marking.

Regular maintenance is not only vital to preserve the good condition and slip resistance of your sports floor, but also to preserve its warranty.



## Sports Walling

DYNAMIK Internal Sports Walling can ensure you meet current design requirements as set out by Building Regulations (within Building Bulletin 93) and Sport England guidance with regards to sound absorption and fire rating. Potential savings in both construction time and cost can also be achieved when the panels are an integral part of the construction of your hall.

The Solid & Perforated Wall panels are available in a range of wood effects & colours. They complement the sports floor to give a complete solution for the internal finishes of your sports hall and create an environment that is aesthetically pleasing and functional.





# Case Study

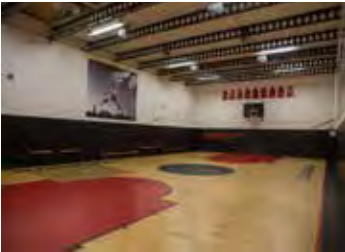
## The Black Prince Trust Chooses DYNAMIK

The Jordan and Regal Courts, owned by the Black Prince Trust in South London, were in need of the DYNAMIK touch.

The famous facilities are situated in The Black Prince Community Hub in Lambeth, a charity that works with other commercial organisations to offer sessions and sports programmes to the local community. The Regal & Jordan courts are dedicated, state-of-the-art indoor basketball facilities that receive thousands of visitors each year and serve to encourage and facilitate players from beginners through to British Basketball League (BBL) Athletes.

### The Jordan Court

Repairs were carried out to the Jordan floor before completing a full sand lacquer re-seal, and re-line marking.



The new court lines also incorporate the Nike Jump Man Logo.

### The Regal Court

The Regal Court underwent a larger renovation. As there were a few dead spots around the floor, the decision was made to replace it, and so DYNAMIK uplifted and disposed of the old timber surface.



High sports performance, durability and timber stability were key factors to consider, for this reason DYNAMIK chose to install their Flexi-Beam Elite sprung system finished in the 22mm Engineered Oak board.

With new court lines applied, the Black Borders and Key Infills emphasised the inner court area. The addition of The Regal and Nike Logos complimented this striking refurbishment.











# | A Selection of DYNAMIK's Projects

## Universities

- Cardiff Metropolitan University
- Manchester Metropolitan University
- University of Bath
- University of Cambridge
- University of East London (UEL)
- University of Essex
- University of Gloucestershire
- University of Liverpool
- University of Nottingham
- University of Oxford
- University of St Andrews
- University of Worcester

## Colleges

- Barking & Dagenham College
- Bolton Community College
- Brighton College
- Cheltenham Ladies' College
- Ealing & Hammersmith College
- Emmanuel College, Gateshead
- Hartpury College
- Jane Austen College, Norwich
- Myerscough College, Preston
- Newbold College, Binfield
- South Gloucestershire and Stroud College
- Perth College
- Torquay College

## Schools

- ACS Egham International School
- Ashlyns School, Berkhamsted
- Barking Abbey School
- Box Hill School
- Don Valley Academy, Doncaster
- Gateshead Academy for Sport
- Haberdashers' Monmouth School for Girls
- Kings College School, Cambridge
- Repton School
- Loretto School, Musselburgh
- Millfield School, Street
- Merchant Taylors' School, Northwood
- St George's, Weybridge
- The Marist Schools, Ascot

## Leisure Centres & Other

- National Basketball Performance Centre, Manchester
- English Institute of Sport, Sheffield
- National Centre for Circus Arts, London
- Netball World Championships Liverpool 2019
- British Basketball League Portable Courts
- England Netball Portable Court
- Wales Netball Portable Court
- Bury Roller Skating Arena
- Cosway St. Church, London
- Devon & Cornwall Police HQ
- Five Rivers Leisure Centre, Salisbury
- Hull and East Riding Squash Club
- Leicester Riders Arena
- Newcastle Eagles Community Arena
- Onside Youth Zone Nationwide Projects
- R.A.F. Brize Norton
- Tottenham Hotspur Football Stadium

# | Official Sports Flooring Partners



| Supply Partners:      Members of:



Unit 10 Enterprise Trade Centre  
Roman Farm Road  
Bristol, BS4 1UN

0117 301 5120  
[info@dynamiksport.co.uk](mailto:info@dynamiksport.co.uk)

# DYNAMIK